



Impact on Model Uncertainty of Diabatization in Distillation Columns

Bisgaard, Thomas; Huusom, Jakob Kjøbsted; Abildskov, Jens

Publication date:
2014

Document Version
Publisher's PDF, also known as Version of record

[Link back to DTU Orbit](#)

Citation (APA):
Bisgaard, T., Huusom, J. K., & Abildskov, J. (2014). *Impact on Model Uncertainty of Diabatization in Distillation Columns*. Poster session presented at 10th International Conference on Distillation and Absorption 2014, Friedrichshafen, Germany.

General rights

Copyright and moral rights for the publications made accessible in the public portal are retained by the authors and/or other copyright owners and it is a condition of accessing publications that users recognise and abide by the legal requirements associated with these rights.

- Users may download and print one copy of any publication from the public portal for the purpose of private study or research.
- You may not further distribute the material or use it for any profit-making activity or commercial gain
- You may freely distribute the URL identifying the publication in the public portal

If you believe that this document breaches copyright please contact us providing details, and we will remove access to the work immediately and investigate your claim.

Impact on Model Uncertainty of Diabatization in Distillation Columns

Thomas Bisgaard, Jakob K. Huusom, Jens Abildskov

CAPEC-PROCESS, Department of Chemical and Biochemical Engineering, Technical University of Denmark

1. Introduction

Studies show that operating a Conventional Distillation Column (CDiC) with internal heat transfer (diabatically) can reduce cost of separation. An example is the Heat-Integrated Distillation Column (HIDiC) illustrated in Figure 1.

The majority of studies of the HIDiC are concerned with the potential energy savings and operability, and only a limited amount of model validations have been carried out due to scarcity of experimental data.

The purpose of this study is to perform uncertainty and sensitivity analysis on steady state simulations on conventional and heat-integrated distillation columns.

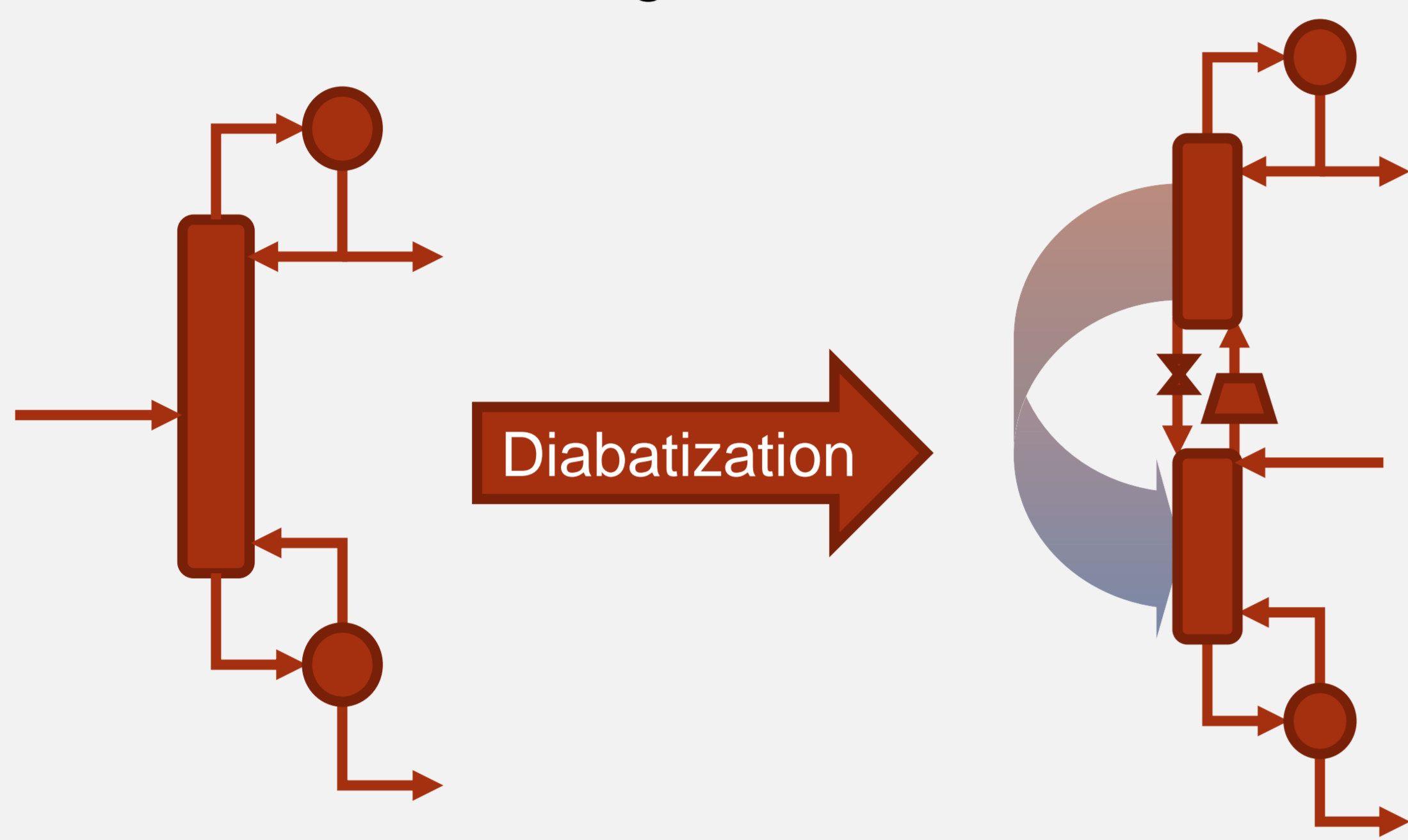


Figure 1. Diabatization of a CDiC (left) to obtain a HIDiC (right).

2. Methods

This study considers 12 separations:

- Benzene/Toluene (BT) and Benzene/Flourobenezene (BF)
- Low purity (95% / 5%) and high purity (99% / 1%)
- CDiC, HIDiC and iHIDiC (with only feed preheater)

Classification:

- Variables: $\mathbf{u} = (P_r, P_s, q, L_C, V_R, F, z)^T$
- Parameters: $\boldsymbol{\theta} = (\alpha, \lambda, A_{Ant}, B_{Ant}, C_{Ant}, U, A, M, T_{\sigma}, \gamma, \eta_c, S_{water}, S_{steam}, S_{electricity}, T_{water}, T_{steam})^T$
- Output: $\mathbf{y} = (\eta_{2nd}, OPEX, CAPEX, \tau_1)^T$

Distributions of selected uncertain parameters:

- Heat of vaporization: $\lambda \sim \mathcal{N}(\lambda_0, 0.975^2 \lambda_0^2)$
- Relative volatility: $\alpha \sim U(0.99\alpha_0, 1.01\alpha_0)$
- Heat transfer coefficient: $UA \sim U(0.90UA_0, 1.10UA_0)$
- Stage holdup: $M \sim U(0.95M_0, 1.05M_0)$
- Adiabatic index: $\gamma \sim U(0.95\gamma_0, 1.05\gamma_0)$

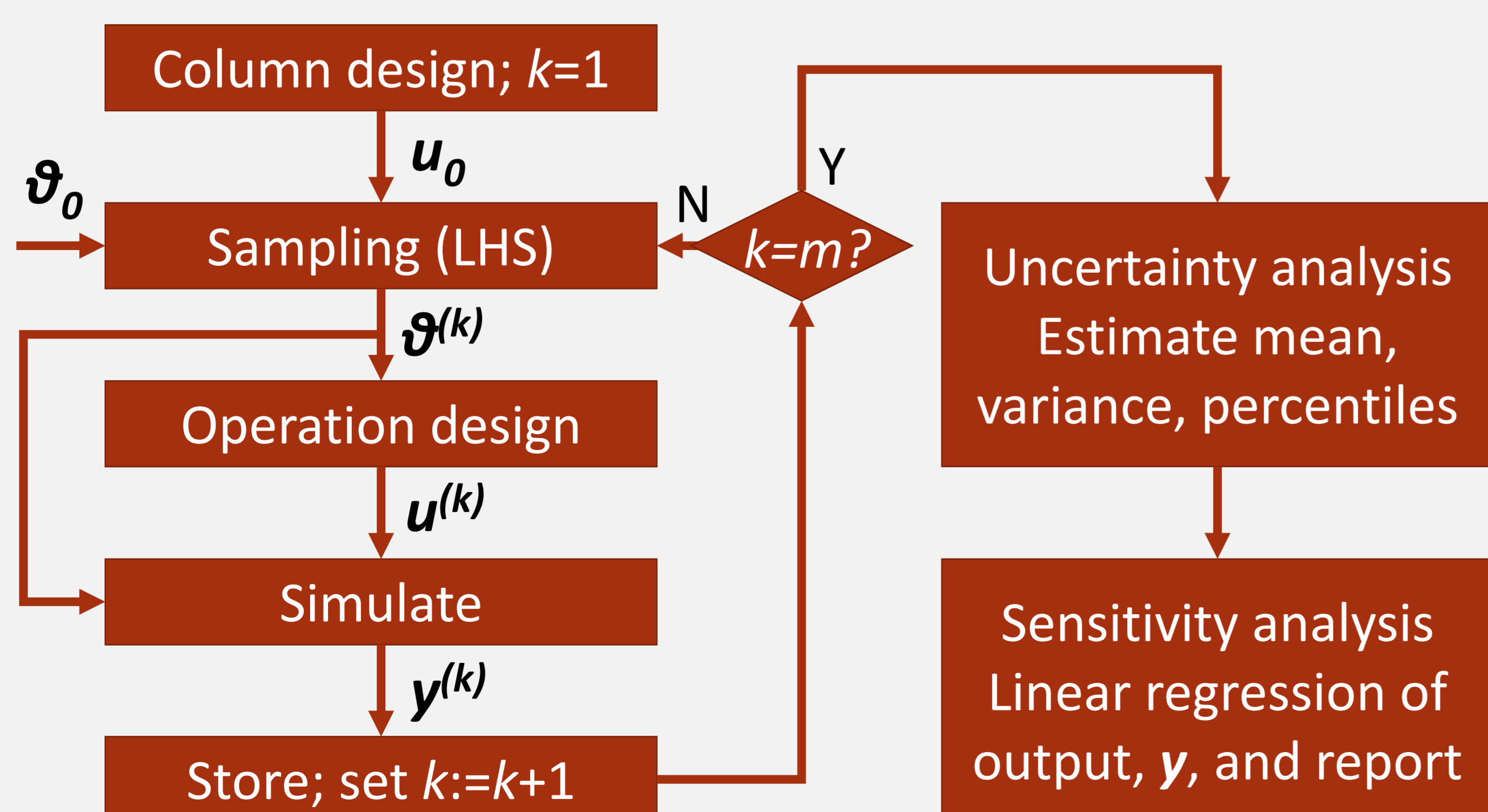


Figure 2. Applied algorithm.

3. Results

Uncertainty analysis

- **Q:** How does the HIDiC perform compared the CDiC, and (if) is the improvement significant? **A:** Table 1 and Figure 3.

Table 1. Nominal operating conditions.

ID	Config.	Mixture	X	α	N_s	A, m ²	q	P_r/P_s	L_C/D	V_R/B
A1	CDiC	BT	0.95	2.4	20	0	1	1	1.26	2.26
B1	HIDiC	BT	0.95	2.4	20	2.5	1	2.93	0.27	1.27
C1	iHIDiC	BT	0.95	2.4	20	5.0	0.5	2.93	0	0
A2	CDiC	BT	0.99	2.4	30	0	1	1	1.44	2.44
B2	HIDiC	BT	0.99	2.4	30	2.5	1	2.89	0.28	1.28
C2	iHIDiC	BT	0.99	2.4	30	5.0	0.5	2.89	0	0
A3	CDiC	BF	0.95	1.2	76	0	1	1	10.0	11.0
B3	HIDiC	BF	0.95	1.2	76	7.5	1	1.70	4.17	5.17
C3	iHIDiC	BF	0.95	1.2	76	15	0.5	1.70	0	0
A4	CDiC	BF	0.99	1.2	118	0	1	1	10.7	11.7
B4	HIDiC	BF	0.99	1.2	118	7.5	1	1.55	4.29	5.29
C4	iHIDiC	BF	0.99	1.2	118	15	0.5	1.55	0	0

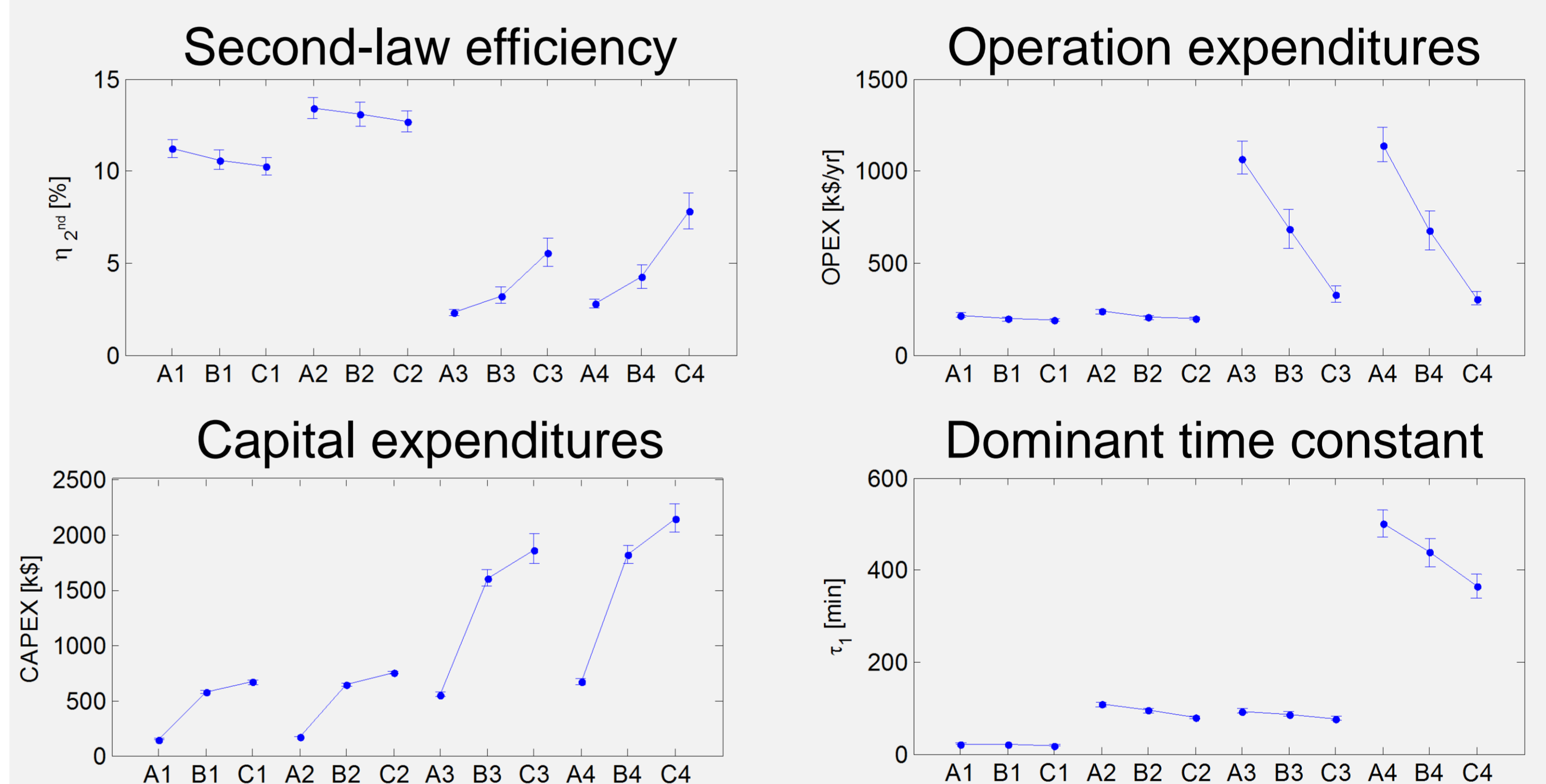


Figure 3. Performance indicators with 95% confidence intervals.

Sensitivity Analysis

- **Q:** Which uncertain parameters have the most significant contribution on uncertainty? **A:** Figure 4.

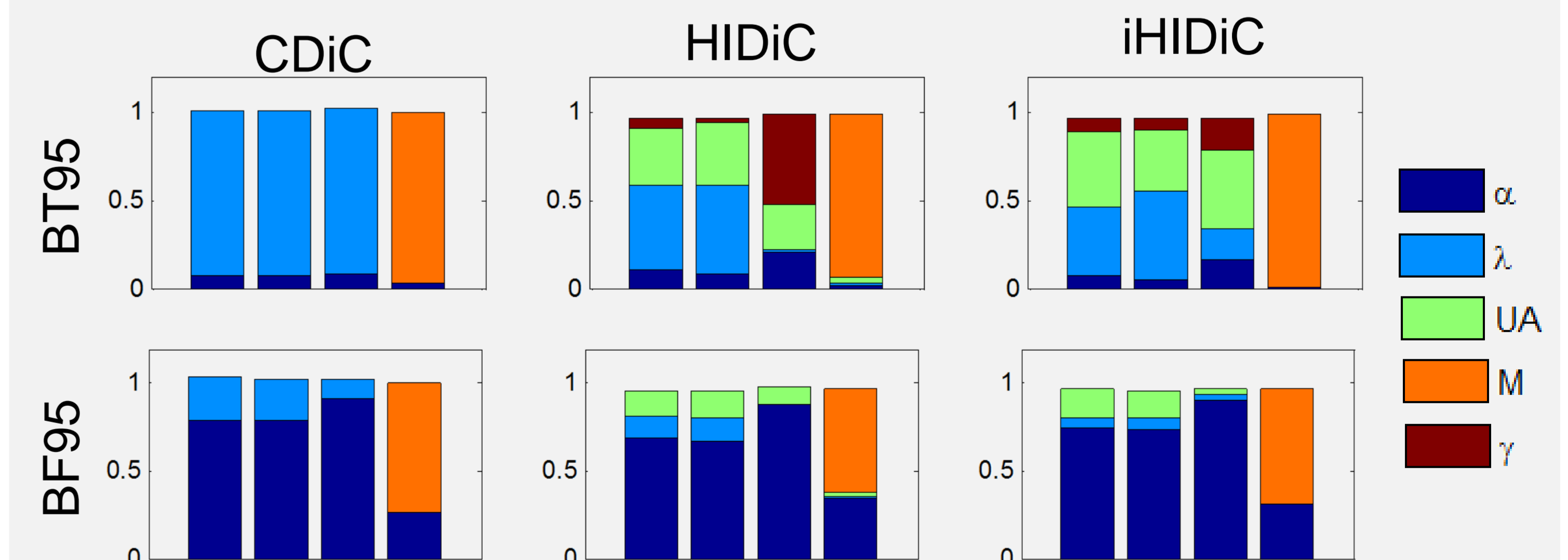


Figure 4. Squared linear regression parameters. Impact on uncertainty is related to the magnitude of individual contributions.

4. Conclusions

- Calculations related to compressor are uncertain (e.g. duty)
- Linear correlation for HIDiC between α and η_{2nd} and OPEX, CAPEX and τ_1
- Significant uncertainty in η_{2nd} and OPEX for HIDiC with many stages
- U has significance on variance in η_{2nd} and OPEX, CAPEX and τ_1 for HIDiC with fewer stages