



Operational river discharge forecasting in poorly gauged basins: the Kavango River Basin case study

Bauer-Gottwein, Peter; Jensen, Iris Hedegaard; Guzinski, R.; Bredtoft, G. K. T.; Hansen, S.; Michailovsky, Claire Irene B.

Published in:
Hydrology and Earth System Sciences Discussions

Link to article, DOI:
[10.5194/hessd-11-11071-2014](https://doi.org/10.5194/hessd-11-11071-2014)

Publication date:
2014

Document Version
Publisher's PDF, also known as Version of record

[Link back to DTU Orbit](#)

Citation (APA):
Bauer-Gottwein, P., Jensen, I. H., Guzinski, R., Bredtoft, G. K. T., Hansen, S., & Michailovsky, C. I. B. (2014). Operational river discharge forecasting in poorly gauged basins: the Kavango River Basin case study. *Hydrology and Earth System Sciences Discussions*. DOI: 10.5194/hessd-11-11071-2014

General rights

Copyright and moral rights for the publications made accessible in the public portal are retained by the authors and/or other copyright owners and it is a condition of accessing publications that users recognise and abide by the legal requirements associated with these rights.

- Users may download and print one copy of any publication from the public portal for the purpose of private study or research.
- You may not further distribute the material or use it for any profit-making activity or commercial gain
- You may freely distribute the URL identifying the publication in the public portal

If you believe that this document breaches copyright please contact us providing details, and we will remove access to the work immediately and investigate your claim.



This discussion paper is/has been under review for the journal Hydrology and Earth System Sciences (HESS). Please refer to the corresponding final paper in HESS if available.

Operational river discharge forecasting in poorly gauged basins: the Kavango River Basin case study

P. Bauer-Gottwein¹, I. H. Jensen¹, R. Guzinski², G. K. T. Bredtøft¹, S. Hansen¹, and C. I. Michailovsky^{1,*}

¹Department of Environmental Engineering, Technical University of Denmark, 2800 Kgs. Lyngby, Denmark

²DHI GRAS, 2970 Hørsholm, Denmark

* now at: Jet Propulsion Laboratory, California Institute of Technology, Pasadena, California, USA

Received: 5 September 2014 – Accepted: 26 September 2014 – Published: 8 October 2014

Correspondence to: P. Bauer-Gottwein (pbau@env.dtu.dk)

Published by Copernicus Publications on behalf of the European Geosciences Union.

Operational river discharge forecasting in poorly gauged basins: the Kavango River case study

P. Bauer-Gottwein et al.

[Title Page](#)

[Abstract](#)

[Introduction](#)

[Conclusions](#)

[References](#)

[Tables](#)

[Figures](#)

[⏪](#)

[⏩](#)

[◀](#)

[▶](#)

[Back](#)

[Close](#)

[Full Screen / Esc](#)

[Printer-friendly Version](#)

[Interactive Discussion](#)



Abstract

Operational probabilistic forecasts of river discharge are essential for effective water resources management. Many studies have addressed this topic using different approaches ranging from purely statistical black-box approaches to physically-based and distributed modelling schemes employing data assimilation techniques. However, few studies have attempted to develop operational probabilistic forecasting approaches for large and poorly gauged river basins. This study is funded by the European Space Agency under the TIGER-NET project. The objective of TIGER-NET is to develop open-source software tools to support integrated water resources management in Africa and to facilitate the use of satellite earth observation data in water management. We present an operational probabilistic forecasting approach which uses public-domain climate forcing data and a hydrologic–hydrodynamic model which is entirely based on open-source software. Data assimilation techniques are used to inform the forecasts with the latest available observations. Forecasts are produced in real time for lead times of 0 to 7 days. The operational probabilistic forecasts are evaluated using a selection of performance statistics and indicators. The forecasting system delivers competitive forecasts for the Kavango River, which are reliable and sharp. Results indicate that the value of the forecasts is greatest for intermediate lead times between 4 and 7 days.

1 Introduction

Operational probabilistic hydrological modelling and river discharge forecasting is an active research topic in water resources engineering and applied hydrology (Pagano et al., 2014). Sharp and reliable forecasts of river discharge are required over a range of forecasting horizons for flood and drought management. A state of the art river discharge forecasting system consists of a weather forecast or an ensemble of weather forecasts (Cloke and Pappenberger, 2009), a hydrologic–hydrodynamic modelling system and a data assimilation approach to inform the forecasts with all available in situ

Operational river discharge forecasting in poorly gauged basins: the Kavango River case study

P. Bauer-Gottwein et al.

[Title Page](#)

[Abstract](#)

[Introduction](#)

[Conclusions](#)

[References](#)

[Tables](#)

[Figures](#)

[⏪](#)

[⏩](#)

[◀](#)

[▶](#)

[Back](#)

[Close](#)

[Full Screen / Esc](#)

[Printer-friendly Version](#)

[Interactive Discussion](#)



and remote sensing observations. Alternatively, in the absence of resources, data and computing power, simpler solutions can be implemented which disregard more and more of the physics and rely on past observations to parameterize black-box type models such as, for instance, artificial neural networks (Maier et al., 2010).

5 Many studies have shown that operational hydrological models can benefit from the assimilation of in-situ or satellite remote sensing observations. Different techniques and approaches have been presented (Liu et al., 2012). They differ both in terms of the type of data that are assimilated to the models, the assimilation algorithms used and in terms of the assimilation strategy, i.e. which model components, states and/or parameters are updated. Some hydrological data assimilation studies update the internal states of rainfall–runoff models (e.g. Clark et al., 2008; Pauwels and De Lannoy, 2009) while other approaches focus the updating on the hydrodynamic parts of the model (Biancamaria et al., 2011; Neal et al., 2009). Probably, the most popular algorithm used in hydrologic data assimilation is the ensemble Kalman filter (e.g. Clark et al., 10 2008). Alternatively, the particle filter (Moradkhani et al., 2005) can be used, which does not require the assumption of Gaussian model errors. Some studies use filtering approaches where the gain is determined heuristically from offline simulations and then used operationally in forecasting mode (Madsen and Skotner, 2005). As pointed out by Liu et al. (2012), despite the large body of literature on hydrologic data assimilation, 15 few studies evaluate the benefit of data assimilation for actual forecasting and practical application of data assimilation by operational agencies is rare.

In many river basins the performance of operational hydrological modelling and forecasting is limited because in-situ observations of precipitation and river discharge are scarce or unavailable. This is also the case for many of Africa’s large river basins which are poorly gauged (e.g. Zambezi, Volta, Congo). Consistent, long-term and spatially 20 resolved in-situ observations of precipitation and river discharge are unavailable for large portions of Africa. Moreover, the number of operational meteorological stations and river discharge stations has been decreasing consistently around the world since the 1970s (Fekete and Vörösmarty, 2007; Peterson and Vose, 1997). Remote sensing 25

Operational river discharge forecasting in poorly gauged basins: the Kavango River case study

P. Bauer-Gottwein et al.

[Title Page](#)

[Abstract](#)

[Introduction](#)

[Conclusions](#)

[References](#)

[Tables](#)

[Figures](#)

[⏪](#)

[⏩](#)

[◀](#)

[▶](#)

[Back](#)

[Close](#)

[Full Screen / Esc](#)

[Printer-friendly Version](#)

[Interactive Discussion](#)



HESSD

11, 11071–11108, 2014

Operational river discharge forecasting in poorly gauged basins: the Kavango River case study

P. Bauer-Gottwein et al.

[Title Page](#)[Abstract](#)[Introduction](#)[Conclusions](#)[References](#)[Tables](#)[Figures](#)[◀](#)[▶](#)[◀](#)[▶](#)[Back](#)[Close](#)[Full Screen / Esc](#)[Printer-friendly Version](#)[Interactive Discussion](#)

techniques have the potential to fill critical data gaps in the observation of the global hydrological cycle. All major components of the water balance, except river discharge, can now be estimated based on various types of remote sensing data. However, the available techniques are still limited by coarse spatial and temporal resolution as well as large and/or poorly understood error characteristics (Tang et al., 2009). From a management perspective one of the most important components of the hydrological cycle is river discharge. Extremely high flows in rivers cause flooding which can have severe consequences in terms of fatalities and economic damage. Low flows cause conflicts in the allocation of scarce water resources between economic sectors and/or the environment. Therefore, in many river basins there is a need for hydrological models to provide operational estimates of river discharge based on remotely sensed observations and limited available in-situ measurements.

The TIGER-NET project addresses the demand for free, up-to-date and spatially resolved water information for the African continent. The project is funded by the European Space Agency (ESA) and aims to support integrated water resources management in Africa by (i) providing access to ESA Earth observation (EO) data, (ii) developing an open-source Water Observation and Information System (WOIS) and (iii) implementing capacity building actions in collaboration with African partner institutions (Guzinski et al., 2014).

The WOIS includes a hydrological modelling component, which supports long-term scenario analysis (e.g. impact of climate change, deforestation etc.) as well as operational probabilistic forecasting. The specific objective for the operational modelling capability is to provide reliable and sharp probabilistic forecasts of river discharge over time horizons of up to one week. In addition to hydrological modelling, WOIS includes functionality for operational flood monitoring, basin characterization at high (~ 30 m) and medium (~ 1 km) spatial resolutions and derivation of other products requiring EO data processing and analysis (Guzinski et al., 2014). It was designed for use in African organizations, where budgetary and technical constraints often limit the use of EO data for integrated water resources management. Therefore, WOIS is based purely on free,

open-source software components and was created as an easy to use tool for both capacity building and operational use. Among the partner institutions engaged in the TIGER-NET project is the Namibian Ministry of Agriculture, Water and Forestry. The Ministry has an interest in forecasting the discharge of the Kavango River.

Based on these requirements, this study has four specific objectives:

1. Development of a robust and simple probabilistic river discharge forecasting system for poorly gauged river basins, based solely on open source software and public-domain data.
2. Informing the forecasting system with in-situ discharge observations in real time.
3. Operational demonstration of the system for the Kavango River case study.
4. Comprehensive evaluation of the operational probabilistic forecasts using a selection of performance statistics and indicators.

2 Materials and methods

2.1 Study area

The Kavango River originates in the highlands of central Angola and flows south to the border between Angola and Namibia. The Cuito River joins the Kavango River just before the river enters into Namibia's Caprivi Strip. It terminates in the Okavango Delta, a large wetland system in Northern Botswana (Milzow et al., 2009). An overview of the basin is provided in Fig. 1. The basin is located on the Southern fringes of the inter-tropical convergence zone. A strong south-to-north precipitation gradient is observed. The climate is highly seasonal and large inter-annual variations are typical, which are controlled by a number of climate time scales (McCarthy et al., 2000; Wolski et al., 2014). The Kavango River is an important resource for all riparian countries and forms the basis of many people's livelihoods (Kgathi et al., 2006). While water scarcity and

Operational river discharge forecasting in poorly gauged basins: the Kavango River case study

P. Bauer-Gottwein et al.

Title Page

Abstract

Introduction

Conclusions

References

Tables

Figures

⏪

⏩

◀

▶

Back

Close

Full Screen / Esc

Printer-friendly Version

Interactive Discussion



Operational river discharge forecasting in poorly gauged basins: the Kavango River case study

P. Bauer-Gottwein et al.

Title Page

Abstract

Introduction

Conclusions

References

Tables

Figures

⏪

⏩

◀

▶

Back

Close

Full Screen / Esc

Printer-friendly Version

Interactive Discussion



water allocation between economic sectors and the environment have been in focus for some time, flood risk has recently become a major concern in Namibia because the northern part of Namibia has experienced increased magnitude and frequency of flooding events since 2008 (Wolski et al., 2014). Water managers need accurate and reliable forecasting tools to deal with both floods and droughts.

Three hydrological modelling efforts have been reported in the literature for the Kavango River Basin. Folwell and Farquharson (2006) used the Global Water Availability Assessment (GWAVA) model to assess climate change impacts in the basin. Hughes et al. (2011, 2006) calibrated a Pitman model for the basin and were able to reproduce in-situ observations satisfactorily. Milzow et al. (2011) developed a SWAT (Soil and Water Assessment Tool) model of the Kavango Basin and calibrated the model with water levels from radar altimetry, soil moisture from Envisat-ASAR and total water storage change from GRACE.

2.2 Hydrologic and hydrodynamic modelling

The modelling approach implemented in this study consists of a hydrologic (rainfall–runoff) model which is coupled to a simple hydrodynamic model for channel flow. A one-way coupling between the two model compartments is implemented, i.e. once runoff has entered the river channel, the water cannot move back into the land phase of the hydrological cycle.

We use the well-known SWAT hydrological model, version 2009 (Gassman et al., 2005; Neitsch et al., 2011) for rainfall–runoff modelling. SWAT is a semi-distributed, physically based hydrological model which operates at a daily time step. The river basin is divided into a number of sub-basins. Each sub-basin is in turn divided into hydrological response units (HRU), which are defined as portions of the sub-basin with similar terrain slope, land use and soil type. The Kavango SWAT model consists of 12 subbasins with outlets located at the confluences of major tributaries as well as at in-situ discharge station locations (Fig. 1).

Operational river discharge forecasting in poorly gauged basins: the Kavango River case study

P. Bauer-Gottwein et al.

Title Page

Abstract

Introduction

Conclusions

References

Tables

Figures

⏪

⏩

◀

▶

Back

Close

Full Screen / Esc

Printer-friendly Version

Interactive Discussion



The hydrodynamic model used in this study is a simple Muskingum routing scheme. The river is divided into 12 primary individual river reaches. The primary reaches are further sub-divided if required to meet the numerical stability criteria of the Muskingum routing scheme (Chow et al., 1988). The hydrodynamic model state vector consists of the simulated discharges in each individual reach. In the Muskingum routing scheme, the model operator propagating the discharge forward in time is linear, i.e. the simulated discharges at time step $t + 1$ are a linear function of the simulated discharges at time step t and the runoff forcings at time steps t and $t + 1$:

$$\mathbf{q}^{t+1} = \mathbf{A}\mathbf{q}^t + \mathbf{B}\mathbf{r}^t + \mathbf{C}\mathbf{r}^{t+1}. \quad (1)$$

In this equation, \mathbf{q} is the vector of simulated discharges and \mathbf{r} is the vector of runoff forcings, \mathbf{A} , \mathbf{B} and \mathbf{C} are linear operators which depend on the configuration of the river channels and network connectivity and the superscripts indicate time steps. For details on the implementation of the Muskingum routing scheme the reader is referred to Chow et al. (1988) and Michailovsky et al. (2013).

2.3 Input data

SWAT requires the following input datasets: elevation, land cover, soil type and climate forcings. The elevation dataset is used for automatic watershed and river network delineation as well as for the determination of terrain slope. We use the ACE2 (Altimeter Corrected Elevation, version 2, Berry et al., 2010) global elevation dataset at a resolution of 30 arcseconds. The parameterization of vegetation processes in the SWAT model is based on the land cover input dataset. We use the USGS Global Land Cover Characterization (GLCC) dataset, version 2.0 with a spatial resolution of 1 km (USGS, 2008). The soil dataset forms the basis for parameterizing soil hydraulic processes in SWAT. We use the FAO/UNESCO digital soil map of the world and derived soil properties, revision 1 with a spatial resolution of 5 arcmin (FAO-Unesco, 1974). Look-up tables translating GLCC land cover classes and FAO/UNESCO soil types into SWAT parameters have been developed by the WaterBase project (George and Leon, 2007).

Operational river discharge forecasting in poorly gauged basins: the Kavango River case study

P. Bauer-Gottwein et al.

[Title Page](#)

[Abstract](#)

[Introduction](#)

[Conclusions](#)

[References](#)

[Tables](#)

[Figures](#)

[⏪](#)

[⏩](#)

[◀](#)

[▶](#)

[Back](#)

[Close](#)

[Full Screen / Esc](#)

[Printer-friendly Version](#)

[Interactive Discussion](#)

The model is forced with daily precipitation and daily minimum and maximum temperature from the National Oceanic and Atmospheric Administration's Global Forecast System (NOAA-GFS) which provides up to seven days of forecast at a six hourly temporal resolution and 0.5° spatial resolution (NOAA, 2014). For historical simulation periods and model calibration, forcing time series consisting of the 1 day ahead forecasts are used. In operational mode, long-term forecasts are successively replaced with short-term forecasts as time proceeds. In order to assess the performance of the NOAA-GFS precipitation forecast for the Kavango region, the 1 day ahead forecasts were compared to FEWS-RFE rainfall estimates (Herman et al., 1997). FEWS-RFE was previously found to be one of the most accurate remote sensing precipitation products for Africa (Milzow et al., 2011; Stisen and Sandholt, 2010).

2.4 Calibration and validation of the hydrologic–hydrodynamic model

Calibration and validation of the hydrologic–hydrodynamic model were performed against observed in situ river discharge using a split-sample approach. The years 2005–2011 were used for calibration, while the years 2012–2014 served as validation period. Data from two in-situ discharge stations (Rundu and Mohembo, see Fig. 1) were available for calibration/validation. The objective function which was minimized in the calibration was formulated as

$$\phi = (1 - \text{NSE})^2 + \text{ME}^2 \quad (2)$$

where NSE is the Nash–Sutcliffe model efficiency (Nash and Sutcliffe, 1970) and ME is the water balance error (mean error). This formulation ensured a reasonable trade-off between fitting the observed hydrographs and matching the observed water balance of the catchment. A sequential calibration strategy was implemented: first, the subcatchments upstream of Rundu were calibrated using Rundu observations and subsequently the subcatchments between Rundu and Mohembo were calibrated using Mohembo observations.

Operational river discharge forecasting in poorly gauged basins: the Kavango River case study

P. Bauer-Gottwein et al.

[Title Page](#)

[Abstract](#)

[Introduction](#)

[Conclusions](#)

[References](#)

[Tables](#)

[Figures](#)

[⏪](#)

[⏩](#)

[◀](#)

[▶](#)

[Back](#)

[Close](#)

[Full Screen / Esc](#)

[Printer-friendly Version](#)

[Interactive Discussion](#)



Calibration was performed using the model-independent parameter estimation programme PEST (Doherty et al., 2014). Because of the strongly non-linear response of the SWAT rainfall–runoff model, global search strategies are the preferred option for calibration of SWAT models (Arnold et al., 2012). We use the shuffled complex evolution (SCE) algorithm (Duan et al., 1992) which performs a global search over the entire allowed parameter space. The SCE algorithm is included in the PEST package (SCEUA_P).

The selection of calibration parameters was the result of an iterative procedure including extensive sensitivity analysis and repeated trial model runs. The final selection was based on the following principles: (i) spatial variation of vegetation and soil parameters is determined by the input datasets and should be left unchanged during calibration. The corresponding SWAT parameters were either not changed at all or multiplied with a global factor. (ii) The water balance of the rainfall–runoff model should be maintained. Therefore the fraction of the recharge entering the deep aquifer was set to zero. (iii) SWAT groundwater parameters are highly uncertain a priori but at the same time very sensitive. Enough spatial variation in groundwater parameters must be allowed in order to reproduce the various recession time scales in the observed hydrographs. (iv) SWAT has two threshold values of the shallow groundwater storage, one controlling the onset of baseflow and one controlling the onset of phreatic evapotranspiration. The absolute magnitudes of the two threshold values are less important because they mainly control the length of the required model warm-up period. However, the difference between these two threshold values has significant control over the water balance of the catchment: if the baseflow threshold is below the phreatic ET threshold, more water will leave the catchment as baseflow and less as actual ET and vice versa. In order to reduce parameter correlation and non-uniqueness, the baseflow threshold was generally fixed at 100 mm in the Kavango SWAT model.

Table 1 provides an overview of the calibration parameters and their allowed ranges. For the groundwater parameters, spatial variation was allowed between the Rundu and Mohembo regions, the upstream and downstream catchments within each region and

Operational river discharge forecasting in poorly gauged basins: the Kavango River case study

P. Bauer-Gottwein et al.

[Title Page](#)

[Abstract](#)

[Introduction](#)

[Conclusions](#)

[References](#)

[Tables](#)

[Figures](#)

[⏪](#)

[⏩](#)

[◀](#)

[▶](#)

[Back](#)

[Close](#)

[Full Screen / Esc](#)

[Printer-friendly Version](#)

[Interactive Discussion](#)



the high slope and low slope portions of the land surface. This resulted in a total number of 19 calibration parameters for the Rundu region and 20 calibration parameters for the Mohembo region. We chose 8 complexes in the SCE calibration run and the number of complexes remained the same throughout the run. Both the number of parameter sets in each complex and the number of evolution steps before complex shuffling were set to 39 and 41 for the Rundu and Mohembo regions respectively. The convergence criterion was set to a relative improvement of the best objective function of 1 % over 10 shuffling loops. A total of 50 000 model runs were allowed, however the calibration converged after 14 711 and 18 373 model runs for the Rundu and Mohembo regions respectively. After completion of the SCE run, the evolution of the parameter values over the course of the shuffling loops was evaluated. All parameter values converged to a stable solution away from the a priori parameter bounds.

2.5 Assimilation strategy

The objective of data assimilation is to combine, at each point in time, the model-based estimate of the state of the system as well as the most recent observations of the state, to produce the best possible estimate of the current and future states, taking into account the respective uncertainties of simulated states and observations. The assimilation strategy chosen in this study consists of updating the simulated discharge in the Muskingum routing model only, because the objective was to generate probabilistic river discharge forecasts with lead times of up to 7 days. Updates of the rainfall–runoff model states would probably improve long-term forecasts significantly but may have limited effect on forecasts with short lead times in large basins such as the Kavango Basin. Moreover, updating the rainfall–runoff model will require ensemble-based assimilation approaches. For the intended user group of the TIGER-NET products, simplicity and efficiency are key criteria.

Observed in-situ discharge at the station Rundu is assimilated to the model in the operational runs. Because the Muskingum routing operator is linear and the measurement operator is linear too, we can use the standard Kalman filter for state updating.

The Kalman filter is the optimal sequential assimilation method for linear dynamics (Kalman, 1960). If instead of river discharge, water level measurements from space-borne or ground-based instruments are assimilated, the measurement operator becomes non-linear and the extended Kalman filter can be used (Michailovsky et al., 2013). The reader is referred to the literature (e.g. Jazwinski, 1970) for a detailed discussion of the Kalman filter equations.

2.6 Description of the model error

Runoff is assumed to be the dominant source of error in the routing model. While the routing model parameters, which depend on reach geometries and Manning's friction factors, are uncertain, runoff uncertainty can be expected to be much more significant due to the error in the NOAA-GFS rainfall forcing as well as structural deficiencies and/or parameterization errors in the SWAT model. In order to find a reasonable representation of the model error, the magnitude, auto-correlation and spatial cross-correlation of the runoff error had to be assessed. No direct measurements of runoff are available within the river basin. To derive an operational error model, we assume that magnitude and autocorrelation of the relative runoff error are the same as magnitude and autocorrelation of the relative model residuals at the available in-situ discharge stations:

$$w_t = \frac{(Q_{\text{sim},t} - Q_{\text{obs},t})}{Q_{\text{obs},t}} \quad (3)$$

where w_t is the relative model residual (-), $Q_{\text{sim},t}$ is the modelled discharge at the in-situ discharge station at time step t and $Q_{\text{obs},t}$ is the in-situ discharge as time step t . The autocorrelation of the residuals was assumed to be represented by a first order autoregressive (AR1) model:

$$w_t = \delta w_{t-1} + \varepsilon_t \quad (4)$$

Operational river discharge forecasting in poorly gauged basins: the Kavango River case study

P. Bauer-Gottwein et al.

[Title Page](#)

[Abstract](#)

[Introduction](#)

[Conclusions](#)

[References](#)

[Tables](#)

[Figures](#)

[⏪](#)

[⏩](#)

[◀](#)

[▶](#)

[Back](#)

[Close](#)

[Full Screen / Esc](#)

[Printer-friendly Version](#)

[Interactive Discussion](#)



where δ is the AR1 parameter and ε is a sequence of white Gaussian noise with a spatial covariance \mathbf{Q}' . Due to the correlated meteorological inputs the runoff forcing error was assumed to be spatially correlated between the various subcatchments of the model. We assume that the spatial correlation of the runoff forcing error is equivalent to the spatial correlation of the runoff forcing itself. The correlation matrix of the runoff inputs was computed and \mathbf{Q}' was set to:

$$\mathbf{Q}' = \mathbf{C}\sigma(\varepsilon)^2 \quad (5)$$

where \mathbf{C} is the runoff correlation matrix and $\sigma(\varepsilon)^2$ is the variance of the white noise component of the AR1 model. The auto-correlated runoff error state was integrated in the Kalman filter updating scheme by augmenting the model state vector with the correlated noise term (Jazwinski, 1970; Michailovsky et al., 2013). This ensures persistence of assimilation benefits in time.

The major source of error in in-situ discharge observations is the rating curve, which is used to transform readings of river stage into river discharge. Rating curves are particularly unreliable for extreme flow rates and, depending on the channel characteristics, the rating curve changes over time and requires frequent updating. In the absence of detailed information on the in-situ measurement procedure, we assumed the measurement error to be uncorrelated in time and proportional to the discharge. The relative error was assumed to be 10 %, which is a typical value for in-situ discharge derived from rating curves (Di Baldassarre, 2009) and comparable to other hydrologic data assimilation studies (e.g. Clark et al., 2008).

2.7 Operational forecasting and performance evaluation

Operational forecasts have been issued at the daily basis for the validation period and supplied to Namibia's Ministry of Agriculture Water and Forestry for web-based dissemination. A set of criteria were used to assess the performance of the probabilistic river discharge forecasts. Performance assessment was done separately for the open loop model and the 0 to 7 day forecasting horizons. The criteria assess the performance

of the central model forecast, as well as the reliability and sharpness of the probabilistic forecasts. The following criteria were used to assess the performance of the central model forecast: Nash–Sutcliffe model efficiency (NSE), root-mean square error (RMSE), mean error (ME) and persistence index. The persistence index (PI, Bennett et al., 2013) is defined analogous to the NSE:

$$PI = \frac{\frac{1}{n} \sum_{i=1}^n (Q_i - Q_{\text{obs},i})^2 - \frac{1}{n} \sum_{i=1}^n (Q_i - Q_{\text{last}})^2}{-\frac{1}{n} \sum_{i=1}^n (Q_i - Q_{\text{last}})^2} \quad (6)$$

where n is the number of forecasted observations, Q are the forecasts, Q_{obs} are the observations and Q_{last} is the latest available observation before the forecasted observation. While the NSE uses the average of the observations as the benchmark (i.e. a forecast that performs as good as the long-term average of the available observations scores an NSE of 0), the PI uses the last available observation as the benchmark (i.e. a forecast that performs as good as the latest available observation scores a PI of 0).

Reliability and sharpness of the probabilistic forecasts were assessed with the coverage of the 95 % confidence interval (i.e. percentage of observations that fall within the predicted nominal 95 % confidence interval), the sharpness of the 95 % confidence interval (width of predicted 95 % confidence interval), the Interval Skill Score (ISS) of the 95 % confidence interval as well as the continuous ranked probability score (CRPS). The ISS is defined according to Gneiting and Raftery (2007) as:

$$ISS_{\alpha} = \sum_{i=1}^n iss_{\alpha}(l_i, u_i, Q_{\text{obs},i})$$

$$iss_{\alpha}(l, u, Q_{\text{obs}}) = \begin{cases} (u - l) & \text{if } l < Q_{\text{obs}} < u \\ (u - l) + 2/\alpha(l - x) & \text{if } Q_{\text{obs}} < l \\ (u - l) + 2/\alpha(x - u) & \text{if } Q_{\text{obs}} < u \end{cases} \quad (7)$$

Operational river discharge forecasting in poorly gauged basins: the Kavango River case study

P. Bauer-Gottwein et al.

Title Page

Abstract

Introduction

Conclusions

References

Tables

Figures

◀

▶

◀

▶

Back

Close

Full Screen / Esc

Printer-friendly Version

Interactive Discussion



where α is the level of the confidence interval (0.05 in our case), l is the lower and u the upper bound of the confidence interval.

The CRPS is a verification tool for probabilistic forecasts and can be interpreted as the area between the cumulative distribution function of the forecast and the cumulative distribution function of the observation, which is a Heaviside step function. The CRPS thus compares the full distribution function of the forecast with the observation and not only selected confidence intervals. For normally distributed forecasts, a closed-form expression for the CRPS exists (Gneiting et al., 2004):

$$\text{CRPS} = \frac{1}{n} \sum_{i=1}^n \text{crps}(Q_{\text{obs},i}, Q_i, \sigma_i) \quad (8)$$

$$\text{crps}(Q_{\text{obs}}, Q, \sigma) = \sigma \left[\frac{Q_{\text{obs}} - Q}{\sigma} \left(2\Phi \left(\frac{Q_{\text{obs}} - Q}{\sigma} \right) - 1 \right) + 2\phi \left(\frac{Q_{\text{obs}} - Q}{\sigma} \right) - \frac{1}{\sqrt{\pi}} \right]$$

where σ is the SD of the probabilistic forecast, Φ is the cumulative distribution function and ϕ the probability density function of the standard normal distribution.

3 Results

3.1 Comparison of precipitation products

Comparison of the FEWS-RFE and NOAA-GFS precipitation products showed large deviations between the two products. Figure 2 shows a double mass plot for the average precipitation over the entire Kavango River catchment for the period 2005–2012. Obviously, there is a significant bias and the timing of precipitation events is inconsistent too, as evidenced by the wiggles in the double mass curve. The FEWS-RFE product is based on both satellite observations and in-situ gauging stations, while NOAA-GFS is derived from a global weather model. Moreover, FEWS-RFE has been shown to perform well in previous studies on the African continent (Milzow et al., 2011; Stisen

Operational river discharge forecasting in poorly gauged basins: the Kavango River case study

P. Bauer-Gottwein et al.

[Title Page](#)

[Abstract](#)

[Introduction](#)

[Conclusions](#)

[References](#)

[Tables](#)

[Figures](#)

[⏪](#)

[⏩](#)

[◀](#)

[▶](#)

[Back](#)

[Close](#)

[Full Screen / Esc](#)

[Printer-friendly Version](#)

[Interactive Discussion](#)



and Sandholt, 2010). We therefore assume that the FEWS-RFE product is closer to the unknown true precipitation than NOAA-GFS and bias correct the NOAA-GFS data to match the long-term average precipitation for both products. A spatially and temporally constant precipitation correction factor of 0.67 was therefore used throughout the study. Clearly, the quality of the precipitation forcing is a critical issue, which has significant control over the performance of the forecasting system. Within the TIGER-NET framework, we are dependent on public domain datasets and NOAA-GFS was the only free source of operational weather forecasts for the African continent available to the project. Potentially, model performance could be improved if NOAA-GFS data was corrected dynamically, for instance by continuously benchmarking it against real-time or near real-time precipitation products such as FEWS-RFE or TRMM-3B42 (Huffman et al., 2007) for the recent past and estimating a time-variable bias correction. An even better solution would be to merge NOAA-GFS data with in-situ precipitation data. However, no operational dataset of in-situ precipitation observations is available for this part of Africa.

3.2 Performance of the calibrated model

Calibration of the hydrologic–hydrodynamic modelling system with the SCE algorithm was successful. Table 2 summarizes the performance of the calibrated model in the calibration and validation periods for both in-situ river discharge stations (Rundu and Mohembo). The model achieves reasonable NSE values at both stations in the calibration period and water balance errors are small. Performance degrades slightly during the validation period at Rundu. At Mohembo, NSE is significantly lower in the validation period than in the calibration period. One reason could be the low number of observations, which primarily fall into the high-flow season where model performance is generally worse than during the low-flow season. Both stations show much higher water balance errors in the validation period. The modelling system significantly underpredicts observed discharge in the validation period. This behaviour can be explained by the large inter-annual variations in precipitation input that can be observed for this

Operational river discharge forecasting in poorly gauged basins: the Kavango River case study

P. Bauer-Gottwein et al.

Title Page

Abstract

Introduction

Conclusions

References

Tables

Figures

⏪

⏩

◀

▶

Back

Close

Full Screen / Esc

Printer-friendly Version

Interactive Discussion



Operational river discharge forecasting in poorly gauged basins: the Kavango River case studyP. Bauer-Gottwein et al.

[Title Page](#)[Abstract](#)[Introduction](#)[Conclusions](#)[References](#)[Tables](#)[Figures](#)[⏪](#)[⏩](#)[◀](#)[▶](#)[Back](#)[Close](#)[Full Screen / Esc](#)[Printer-friendly Version](#)[Interactive Discussion](#)

region. While the years 2005–2008 were relatively dry, the following years were exceptionally wet in the region (Wolski et al., 2014). The calibrated SWAT model cannot match these inter-annual dynamics and ends up over-predicting flow in the dry years and under-predicting flow in the wet years. Figures 3 and 4 show comparisons of simulated and observed hydrographs for both stations and both simulation periods. Table 1 provides an overview of the calibrated parameter values. All parameter values are physically reasonable and calibrated parameter values do not stick to the bounds of a-priori parameter intervals.

Model residuals were analysed and tested for normality and autocorrelation. Figure 5 summarizes the results of the model error analysis. Figure 5a plots the relative error of the hydrologic–hydrodynamic model vs. the observed discharge. Obviously, the relative error is not independent of discharge; it is higher for low discharge than for high discharge. The Q – Q plot in Fig. 5b shows that the empirical distribution of model errors significantly deviates from a normal distribution. The empirical distribution of the model errors is narrower than the normal distribution and a larger portion of the data is clustered around the mean. The correlogram in Fig. 5c shows highly significant auto-correlation of the model errors. Figure 5d shows the residual model errors (ε) after application of the AR1 model (Eq. 4), plotted against the observed discharge. This distribution looks more even than the distribution of the primary model residuals in Fig. 5a. A test for normality using the Q – Q plot shows significant deviations and again a narrower distribution than the normal distribution (Fig. 5e). Temporal correlations have been effectively removed from the model errors and no significant correlations remain as shown in Fig. 5f. We conclude from this analysis that the relative error of the hydrologic–hydrodynamic model can be reasonably represented with an AR1 model. The time correlation of the AR1 model is $\delta = 0.9917$ on the daily time step. The random error contribution is $\varepsilon = 0.0438$. As explained in the methods section, we assume that the same AR1 model parameters can represent the relative error of the runoff forcing and we use this result to parameterize the model error in the Kalman filter assimilation scheme.

3.3 Discharge forecasting and data assimilation

Table 3 reports the performance statistics for the probabilistic model runs. We report results for the open-loop run without assimilation, the assimilation run (“now-casting”) as well as the 1–7 day ahead forecasts. We only assimilate data from the station Rundu, because (i) no real-time observations are available for Mohembo and (ii) this enables us to assess the effect of upstream assimilation on a downstream station. The indicators are reported for both in-situ stations and for the calibration and the validation period. We are well aware that the observations in the calibration period have been used already for model calibration and are now used again for assimilation. Still, we feel that it is useful to present the statistics for information. Figure 6 shows the open-loop and assimilation run for the station Rundu during calibration and validation periods. Figure 7 presents the 0–7 day ahead forecasting runs for the station Rundu in the validation period. We first assess the performance of the probabilistic open-loop run. Generally, the chosen error model seems to be appropriate. The forecasts produced by the open-loop run are reliable; the coverage of the nominal 95 % confidence interval does not fall below 90 % at any of the stations during any of the periods. However, the open-loop forecasts are not very sharp, as evidenced by the wide confidence intervals in Fig. 6. This results in a relatively high ISS score.

The assimilation run is much sharper for all stations and periods and we do not observe a significant loss of reliability, except for Mohembo during the validation period. This can again be explained by the low number of observations at Mohembo during the validation period as well as relative over-sampling of the high-flow period. ISS scores are consequently much lower than for the open-loop run, which indicates massive improvement. The 1–7 day ahead forecast runs show degrading performance for increasing lead times. However, even the 7 day ahead forecast generally has a lower ISS than the open-loop run, except for Rundu during the validation period. Figure 8 graphically summarizes the performance indicators. Clearly, the central forecast is better for all lead times than the central run in the open-loop simulation. All three indicators

Operational river discharge forecasting in poorly gauged basins: the Kavango River case study

P. Bauer-Gottwein et al.

[Title Page](#)

[Abstract](#)

[Introduction](#)

[Conclusions](#)

[References](#)

[Tables](#)

[Figures](#)

[⏪](#)

[⏩](#)

[◀](#)

[▶](#)

[Back](#)

[Close](#)

[Full Screen / Esc](#)

[Printer-friendly Version](#)

[Interactive Discussion](#)



(NSE, RMSE and ME) show significant improvement. Coverage decreases rapidly with increasing lead time for the station Rundu but is more or less independent of lead time for the station Mohembo. This can be explained by the routing time lag between the two stations. Improvements due to assimilation of Rundu data travel down to Mohembo and are still visible at this station after many days. For the station Rundu, increased sharpness is over-compensated by loss of reliability, which leads to increasing ISS scores with increasing lead time. For the validation period, only the 0–3 ahead forecasts are better than the open-loop run, if evaluated with the ISS score.

We generally observe weaker performance of the forecasting system after longer periods without in-situ observations. If no in-situ data is available for some time, the model error increases. After observations become available again, large updates are applied to the model states by the Kalman filter, which are then traveling downstream in the river and can cause erratic response. Table 4 shows performance indicators of the forecasting system for a portion of the validation period. In this dataset, the first few observations that come in after extended periods without observations are removed. In total, about 15 % of the observations were discarded when computing the performance indicators. For this reduced dataset, the ISS score for all forecasting horizons remains well below the score of the open-loop simulation. For this dataset, we also computed the persistence index and the CRPS score, which are graphically displayed in Fig. 9. According to the CRPS score, the forecasts are far superior to the open-loop run for all forecasting horizons. The persistence index only evaluates the performance of the central forecast and compares it to the performance of a deterministic forecast equal to the last available observation. The results indicate that, for short lead times, the last observation outperforms the central forecast, while for longer lead times, the forecasting system performs better than the last observation. The break-even point occurs somewhere around a lead time of 4 days. However, it is important to note that the PI does not assess the quality of probabilistic forecasts in terms of sharpness and reliability but only takes the central forecast into account.

Operational river discharge forecasting in poorly gauged basins: the Kavango River case study

P. Bauer-Gottwein et al.

[Title Page](#)[Abstract](#)[Introduction](#)[Conclusions](#)[References](#)[Tables](#)[Figures](#)[◀](#)[▶](#)[◀](#)[▶](#)[Back](#)[Close](#)[Full Screen / Esc](#)[Printer-friendly Version](#)[Interactive Discussion](#)

4 Discussion

The presented approach for the generation of probabilistic river discharge forecasts is simple and robust and designed to work in data-sparse and poorly gauged basins. A key factor for the performance of the system is the rainfall forcing. While the NOAA-GFS rainfall can produce reasonably reliable and sharp forecasts for the Kavango River, the product should be further compared against other operational precipitation products. A promising avenue for future research may be dynamic bias correction using other precipitation or soil moisture products. From Fig. 9, we conclude that extending the forecast lead time beyond 7 days could add value to the system, because CRPS scores are still well below the open-loop score at 7 day lead time and the persistence index indicates break-even at around 4 days. NOAA-GFS does actually provide forecasts up to 16 days into the future. However, the spatial resolution is reduced by a factor of 2 for forecasting horizons beyond one week. It may nevertheless be valuable to explore the use of more long-term weather forecasts. To further improve the reliability and sharpness of the forecasts, an ensemble of weather forecasts should be used to drive the forecasting system (Cloke and Pappenberger, 2009). However, such systems are presently not available for Southern Africa.

As in other hydrologic data assimilation studies (e.g. Clark et al., 2008), parameterization of the model error is a fundamental issue for the performance of the assimilation scheme. Generally, model error terms can be added to the forcings, the states, and the parameters of a model. Here, we assign all model error to the runoff forcing and quantify magnitude and auto-correlation of the error based on the comparison of simulated and observed river discharge. Unlike other authors, we do not apply error terms to the states and parameters of the routing model, because we assume that these error contributions are minor compared to the runoff error. While this approach is robust and efficient, it clearly represents a strong simplification of reality. It is clear that the simple Muskingum routing model has significant structural error, for instance due to the fact that floodplains and surface water/groundwater interactions are not simulated.

Operational river discharge forecasting in poorly gauged basins: the Kavango River case study

P. Bauer-Gottwein et al.

[Title Page](#)

[Abstract](#)

[Introduction](#)

[Conclusions](#)

[References](#)

[Tables](#)

[Figures](#)

[⏪](#)

[⏩](#)

[◀](#)

[▶](#)

[Back](#)

[Close](#)

[Full Screen / Esc](#)

[Printer-friendly Version](#)

[Interactive Discussion](#)



Operational river discharge forecasting in poorly gauged basins: the Kavango River case study

P. Bauer-Gottwein et al.

[Title Page](#)

[Abstract](#)

[Introduction](#)

[Conclusions](#)

[References](#)

[Tables](#)

[Figures](#)

[⏪](#)

[⏩](#)

[◀](#)

[▶](#)

[Back](#)

[Close](#)

[Full Screen / Esc](#)

[Printer-friendly Version](#)

[Interactive Discussion](#)

As is common for studies dealing with probabilistic river discharge forecasting, we find that our probabilistic forecasts are over-reliable during low flow periods and under-reliable during high-flow periods. This issue can be addressed by separating the total runoff forcing generated by the SWAT model into its components, i.e. overland flow, interflow and baseflow, and developing separate error representations for the various runoff components. However, given the sparse availability of in-situ observations in the basins, it may be difficult to find robust parameters for these error representations.

In this study, focus has been on the final output of the modelling chain, i.e. river discharge. However, SWAT simulates a multitude of intermediate states and fluxes in the land phase of the hydrological cycle, which could be analysed and compared to observations, if such observations were available. There is an obvious opportunity to inform the modelling system with other types of in-situ and remote sensing observations such as radar altimetry, soil moisture and total water storage from time-variable gravity (Milzow et al., 2011). If such data were to be formally assimilated to the modelling system, an ensemble approach would have to be chosen because of the highly non-linear responses inherent in the SWAT model. Many studies have addressed ensemble-based streamflow forecasting with lumped-conceptual or distributed hydrological models. Common issues in these studies are high computational demand, time lags between the rainfall–runoff model states and streamflow response, and model error parameterization (e.g. Clark et al., 2008).

5 Conclusions

We have presented an operational probabilistic river discharge forecasting system for poorly gauged basins which relies exclusively on public-domain, open-source software and data. The forecasting system is specifically adapted to the conditions prevailing in many African basins, such as weak in-situ monitoring infrastructure, budget constraints for operational monitoring and management as well as weak institutional capacity. We demonstrated the performance of the forecasting system for the Kavango River and

Operational river discharge forecasting in poorly gauged basins: the Kavango River case study

P. Bauer-Gottwein et al.

[Title Page](#)

[Abstract](#)

[Introduction](#)

[Conclusions](#)

[References](#)

[Tables](#)

[Figures](#)

[⏪](#)

[⏩](#)

[◀](#)

[▶](#)

[Back](#)

[Close](#)

[Full Screen / Esc](#)

[Printer-friendly Version](#)

[Interactive Discussion](#)

obtained encouraging results. Zero to 7 day ahead probabilistic forecasts produced by the system are sharp and reliable. The results indicate that forecasting horizons could be extended to more than seven days, if suitable weather forecasting products can be made available. The system may also benefit from ingestion of other types of in-situ or remotely sensed observations such as radar altimetry and soil moisture. The TIGER-NET project and its Water Observation and Information System (WOIS) provide an ideal platform to combine remote sensing observations and hydrological models to generate accurate estimates of hydrological states as well as sharp and reliable forecasts for operational water resources management.

Acknowledgements. We acknowledge funding from the European Space Agency (ESA) through the TIGER-NET project. Real-time and historical in-situ observations for the station Rundu were provided by Namibia's Ministry of Agriculture Water and Forestry. Historical in-situ observations for the station Mohembo were provided by Botswana's Department of Water Affairs.

References

- Arnold, J. G., Moriasi, D. N., Gassman, P. W., Abbaspour, K. C., White, M. J., Srinivasan, R., Santhi, C., Harmel, R. D., van Griensven, A., Van Liew, M. W., Kannan, N., and Jha, M. K.: SWAT: model use, calibration, and validation, *T. ASABE*, 55, 1491–1508, 2012.
- Bennett, N. D., Croke, B. F. W., Guariso, G., Guillaume, J. H. A., Hamilton, S. H., Jakeman, A. J., Marsili-Libelli, S., Newham, L. T. H., Norton, J. P., Perrin, C., Pierce, S. A., Robson, B., Seppelt, R., Voinov, A. A., Fath, B. D., and Andreassian, V.: Characterising performance of environmental models, *Environ. Modell. Softw.*, 40, 1–20, doi:10.1016/j.envsoft.2012.09.011, 2013.
- Berry, P. A. M., Smith, R. G., and Benveniste, J.: ACE2: the new global digital elevation model, in: *Gravity, Geoid and Earth Observation*, edited by: Mertikas, S. P., IAG Symp., 135, 231–237, doi:10.1007/978-3-642-10634-7_30, 2010.

Operational river discharge forecasting in poorly gauged basins: the Kavango River case study

P. Bauer-Gottwein et al.

Title Page

Abstract

Introduction

Conclusions

References

Tables

Figures

◀

▶

◀

▶

Back

Close

Full Screen / Esc

Printer-friendly Version

Interactive Discussion



Biancamaria, S., Durand, M., Andreadis, K. M., Bates, P. D., Boone, A., Mognard, N. M., Rodríguez, E., Alsdorf, D. E., Lettenmaier, D. P., and Clark, E. A.: Assimilation of virtual wide swath altimetry to improve Arctic river modeling, *Remote Sens. Environ.*, 115, 373–381, doi:10.1016/j.rse.2010.09.008, 2011.

5 Chow, V. T., Maidment, D. R., and Mays, L. W.: *Applied Hydrology*, Water Resources and Environmental Engineering, McGraw-Hill, New York, 1988.

Clark, M. P., Rupp, D. E., Woods, R. A., Zheng, X., Ibbitt, R. P., Slater, A. G., Schmidt, J., and Uddstrom, M. J.: Hydrological data assimilation with the ensemble Kalman filter: use of streamflow observations to update states in a distributed hydrological model, *Adv. Water Resour.*, 31, 1309–1324, doi:10.1016/j.advwatres.2008.06.005, 2008.

10 Cloke, H. L. and Pappenberger, F.: Ensemble flood forecasting: a review, *J. Hydrol.*, 375, 613–626, doi:10.1016/j.jhydrol.2009.06.005, 2009.

Di Baldassarre, G. and Montanari, A.: Uncertainty in river discharge observations: a quantitative analysis, *Hydrol. Earth Syst. Sci.*, 13, 913–921, doi:10.5194/hess-13-913-2009, 2009.

15 Doherty, J., Muffels, C., Rumbaugh, J., and Tonkin, M.: PEST, Model Independent Parameter Estimation and Uncertainty Analysis, available at: <http://www.pesthomepage.org/Home.php>, last access: 16 July 2014.

Duan, Q. Y., Sorooshian, S., and Gupta, V.: Effective and efficient global optimization for conceptual rainfall–runoff models, *Water Resour. Res.*, 28, 1015–1031, doi:10.1029/91WR02985, 1992.

20 FAO-Unesco: *Soil Map of the World 1 : 5 000 000*, Paris, 1974.

Fekete, B. M. and Vörösmarty, C. J.: The current status of global river discharge monitoring and potential new technologies complementing traditional discharge measurements, in: *IAHS-AISH Publ. 309, Proceedings of the PUB Kick-off Meeting, Brasilia, Brazil, 2007*.

25 Folwell, S. and Farquharson, F.: The impacts of climate change on water resources in the Okavango Basin, in: *Climate Variability and Change – Hydrological Impacts*, edited by: Demuth, S., Gustard, A., Planos, E., Scatena, F., and Servat, E., *IAHS-AISH Publ.*, 308, 382–388, 2006.

Gassman, P. W., Reyes, M. R., Green, C. H., and Arnold, J. G.: SWAT peer-reviewed literature?: a review, *Hydrol. Process.*, 13, 1–17, 2005.

30 George, C. and Leon, L. F.: WaterBase?: SWAT in an open source GIS, *Open Hydrol. J.*, 1, 19–24, 2007.

Operational river discharge forecasting in poorly gauged basins: the Kavango River case study

P. Bauer-Gottwein et al.

[Title Page](#)

[Abstract](#)

[Introduction](#)

[Conclusions](#)

[References](#)

[Tables](#)

[Figures](#)

[⏪](#)

[⏩](#)

[◀](#)

[▶](#)

[Back](#)

[Close](#)

[Full Screen / Esc](#)

[Printer-friendly Version](#)

[Interactive Discussion](#)

- Gneiting, T. and Raftery, A. E.: Strictly proper scoring rules, prediction, and estimation, *J. Am. Stat. Assoc.*, 102, 359–378, doi:10.1198/016214506000001437, 2007.
- Gneiting, T., Westveld III, A. H., Raftery, A. E., and Goldman, T.: Calibrated Probabilistic Forecasting using Ensemble Model Output Statistics and Minimum CRPS Estimation*, Technical Report no. 449, Department of Statistics, University of Washington, Seattle, Washington, 2004.
- Guzinski, R., Kass, S., Huber, S., Bauer-Gottwein, P., Jensen, I. H., Naeimi, V., Doubkova, M., Walli, A., and Tottrup, C.: A water observation and information system for integrated water resource management in Africa, *Remote Sens.*, 6, 7819–7839, doi:10.3390/rs60x000x, 2014.
- Herman, A., Kumar, V. B., Arkin, P. A., and Kousky, J. V.: Objectively determined 10-day African rainfall estimates created for famine early warning systems, *Int. J. Remote Sens.*, 18, 2147–2159, doi:10.1080/014311697217800, 1997.
- Huffman, G. J., Bolvin, D. T., Nelkin, E. J., Wolff, D. B., Adler, R. F., Gu, G., Hong, Y., Bowman, K. P., and Stocker, E. F.: The TRMM Multisatellite Precipitation Analysis (TMPA): quasi-global, multiyear, combined-sensor precipitation estimates at fine scales, *J. Hydrometeorol.*, 8, 38–55, doi:10.1175/JHM560.1, 2007.
- Hughes, D. A., Andersson, L., Wilk, J., and Savenije, H. H. G.: Regional calibration of the Pitman model for the Okavango River, *J. Hydrol.*, 331, 30–42, doi:10.1016/j.jhydrol.2006.04.047, 2006.
- Hughes, D. A., Kingston, D. G., and Todd, M. C.: Uncertainty in water resources availability in the Okavango River Basin as a result of climate change, *Hydrol. Earth Syst. Sci.*, 15, 931–941, doi:10.5194/hess-15-931-2011, 2011.
- Jazwinski, A. H.: *Stochastic Processes and Filtering Theory*, Academic Press, New York, 1970.
- Kalman, R. E.: A new approach to linear filtering and prediction problems, *J. Basic Eng.-T. ASME*, 82, 35–45, 1960.
- Kgathi, D. L., Kniveton, D., Ringrose, S., Turton, A. R., Vanderpost, C. H. M., Lundqvist, J., and Seely, M.: The Okavango; a river supporting its people, environment and economic development, *J. Hydrol.*, 331, 3–17, doi:10.1016/j.jhydrol.2006.04.048, 2006.

Operational river discharge forecasting in poorly gauged basins: the Kavango River case study

P. Bauer-Gottwein et al.

[Title Page](#)[Abstract](#)[Introduction](#)[Conclusions](#)[References](#)[Tables](#)[Figures](#)[◀](#)[▶](#)[◀](#)[▶](#)[Back](#)[Close](#)[Full Screen / Esc](#)[Printer-friendly Version](#)[Interactive Discussion](#)

Liu, Y., Weerts, A. H., Clark, M., Hendricks Franssen, H.-J., Kumar, S., Moradkhani, H., Seo, D.-J., Schwanenberg, D., Smith, P., van Dijk, A. I. J. M., van Velzen, N., He, M., Lee, H., Noh, S. J., Rakovec, O., and Restrepo, P.: Advancing data assimilation in operational hydrologic forecasting: progresses, challenges, and emerging opportunities, *Hydrol. Earth Syst. Sci.*, 16, 3863–3887, doi:10.5194/hess-16-3863-2012, 2012.

Madsen, H. and Skotner, C.: Adaptive state updating in real-time river flow forecasting – a combined filtering and error forecasting procedure, *J. Hydrol.*, 308, 302–312, doi:10.1016/j.jhydrol.2004.10.030, 2005.

Maier, H. R., Jain, A., Dandy, G. C., and Sudheer, K. P.: Methods used for the development of neural networks for the prediction of water resource variables in river systems: current status and future directions, *Environ. Modell. Softw.*, 25, 891–909, doi:10.1016/j.envsoft.2010.02.003, 2010.

McCarthy, T. S., Cooper, G. R. J., Tyson, P. D., and Ellery, W. N.: Seasonal flooding in the Okavango Delta, Botswana – recent history and future prospects, *S. Afr. J. Sci.*, 96, 25–33, 2000.

Michailovsky, C. I., Milzow, C., and Bauer-Gottwein, P.: Assimilation of radar altimetry to a routing model of the Brahmaputra River, *Water Resour. Res.*, 49, 4807–4816, doi:10.1002/wrcr.20345, 2013.

Milzow, C., Kgotthang, L., Bauer-Gottwein, P., Meier, P., and Kinzelbach, W.: Regional review: the hydrology of the Okavango Delta, Botswana – processes, data and modelling, *Hydrogeol. J.*, 17, 1297–1328, doi:10.1007/s10040-009-0436-0, 2009.

Milzow, C., Krogh, P. E., and Bauer-Gottwein, P.: Combining satellite radar altimetry, SAR surface soil moisture and GRACE total storage changes for hydrological model calibration in a large poorly gauged catchment, *Hydrol. Earth Syst. Sci.*, 15, 1729–1743, doi:10.5194/hess-15-1729-2011, 2011.

Moradkhani, H., Hsu, K.-L., Gupta, H., and Sorooshian, S.: Uncertainty assessment of hydrologic model states and parameters: sequential data assimilation using the particle filter, *Water Resour. Res.*, 41, W05012, doi:10.1029/2004WR003604, 2005.

Nash, J. E. and Sutcliffe, J. V.: River flow forecasting through conceptual models part I – a discussion of principles, *J. Hydrol.*, 10, 282–290, 1970.

Neal, J., Schumann, G., Bates, P., Buytaert, W., Matgen, P., and Pappenberger, F.: A data assimilation approach to discharge estimation from space, *Hydrol. Process.*, 23, 3649, 3641–3649, doi:10.1002/hyp.7518, 2009.

Operational river discharge forecasting in poorly gauged basins: the Kavango River case study

P. Bauer-Gottwein et al.

[Title Page](#)

[Abstract](#)

[Introduction](#)

[Conclusions](#)

[References](#)

[Tables](#)

[Figures](#)

[⏪](#)

[⏩](#)

[◀](#)

[▶](#)

[Back](#)

[Close](#)

[Full Screen / Esc](#)

[Printer-friendly Version](#)

[Interactive Discussion](#)



Neitsch, S. L., Arnold, J. G., Kiniry, J. R., and Williams, J. R.: Soil & Water Assessment Tool Theoretical Documentation Version 2009, Texas Water Resources Institute Technical Report No. 406, Texas A & M University System, College Station, Texas, 2011.

NOAA: GFS Global Forecast System, available at: <http://www.emc.ncep.noaa.gov/index.php?branch=GFS>, last access: 16 July 2014.

Pagano, T. C., Wood, A. W., Ramos, M.-H., Cloke, H. L., Pappenberger, F., Clark, M. P., Cranston, M., Kavetski, D., Mathevet, T., Sorooshian, S., and Verkade, J. S.: Challenges of operational river forecasting, *J. Hydrometeorol.*, 15, 1692–1707, doi:10.1175/JHM-D-13-0188.1, 2014.

Pauwels, V. R. N. and De Lannoy, G. J. M.: Ensemble-based assimilation of discharge into rainfall–runoff models: a comparison of approaches to mapping observational information to state space, *Water Resour. Res.*, 45, W08428, doi:10.1029/2008WR007590, 2009.

Peterson, T. C. and Vose, R. S.: An overview of the global historical climatology network temperature database, *B. Am. Meteorol. Soc.*, 78, 2837–2849, doi:10.1175/1520-0477(1997)078<2837:A00TGH>2.0.CO;2, 1997.

Stisen, S. and Sandholt, I.: Evaluation of remote-sensing-based rainfall products through predictive capability in hydrological runoff modelling, *Hydrol. Process.*, 24, 879–891, doi:10.1002/hyp.7529, 2010.

Tang, Q., Gao, H., Lu, H., and Lettenmaier, D. P.: Remote sensing: hydrology, *Prog. Phys. Geogr.*, 33, 490–509, doi:10.1177/0309133309346650, 2009.

USGS: Global Land Cover Characteristics Data Base Version 2.0, available at: <http://edc2.usgs.gov/glcc/glcc.php> (last access: 16 July 2014), 2008.

Wolski, P., Stone, D., Tadross, M., Wehner, M., and Hewitson, B.: Attribution of floods in the Okavango Basin, Southern Africa, *J. Hydrol.*, 511, 350–358, doi:10.1016/j.jhydrol.2014.01.055, 2014

Table 1. Model calibration parameters. Subcatchment IDs for the various regions: $r = 2+3+5+6+7+9+10$; $m = 1+4+8+11+12$; $ru = 2+3$; $rd = 5+6+7+9+10$; $\mu = 1$; $md = 4+8+11+12$; $ruh =$ HRUs in region ru with terrain slope above 2%; $rul =$ HRUs in region ru with terrain slope below 2%; $rdh =$ HRUs in region rd with terrain slope above 2%; $rdl =$ HRUs in region rd with terrain slope below 2%; $\mu h =$ HRUs in region μ with terrain slope above 2%; $\mu l =$ HRUs in region μ with terrain slope below 2%; $mdh =$ HRUs in region md with terrain slope above 2%; $mdl =$ HRUs in region md with terrain slope below 2%.

Parameter	Description and unit	Lower bound	Region	Calibrated value	Upper bound				
CN2_m	Multiplier on the SCS curve number for moisture condition II (dimensionless)	0.6	r	0.63	1.2				
ESCO	Soil evaporative compensation factor (dimensionless)	0.5	r	0.65	1				
EPCO	Plant uptake compensation factor (dimensionless)	0.5	r	0.89	1				
CH_N1	Manning's n for tributary channels ($\text{sm}^{-1/3}$)	0.02	r	0.92	0.2				
CH_N2	Manning's n for main reaches ($\text{sm}^{-1/3}$)	0.02	r	0.185	0.2				
GW_DELAY	Groundwater delay (days)	30	m	0.023					
ALPHA_BF	Base flow recession constant (dimensionless)	0.05	ru	81.3	1				
			rd	43.4					
			mu	101.6					
			md	112.8					
			ruh	0.676					
			rul	0.177					
			rdh	0.221					
			rdl	0.730					
			muh	0.846					
			mul	0.264					
GW_REVAP	Groundwater re-evaporation coefficient (dimensionless)	0	mdh	0.161	1				
			mdl	0.080					
			ruh	0.81					
			rul	0.90					
			rdh	0.68					
			rdl	0.53					
			muh	0.75					
			mul	0.86					
			mdh	0.90					
			mdl	0.26					
REVAPMN	Threshold depth of water in shallow aquifer for re-evaporation to occur (mm)	0	ruh	103	200				
			rul	29					
			rdh	75					
			rdl	31					
			muh	15					
			mul	100					
			mdh	97					
			mdl	26					
			LOSS_11	Fractional loss from the Kavango River between Rundu and Mohembo, due to evaporation, infiltration and abstraction (dimensionless)		0		0.011	0.2

Operational river discharge forecasting in poorly gauged basins: the Kavango River case study

P. Bauer-Gottwein et al.

Title Page

Abstract Introduction

Conclusions References

Tables Figures

⏪ ⏩

◀ ▶

Back Close

Full Screen / Esc

Printer-friendly Version

Interactive Discussion



Operational river discharge forecasting in poorly gauged basins: the Kavango River case study

P. Bauer-Gottwein et al.

[Title Page](#)

[Abstract](#)

[Introduction](#)

[Conclusions](#)

[References](#)

[Tables](#)

[Figures](#)

[⏪](#)

[⏩](#)

[◀](#)

[▶](#)

[Back](#)

[Close](#)

[Full Screen / Esc](#)

[Printer-friendly Version](#)

[Interactive Discussion](#)



Table 2. Model performance for calibration and validation periods. Numbers in brackets are percent of mean observed flow.

In-situ station	NSE (-)	RMSE ($\text{m}^3 \text{s}^{-1}$)	ME ($\text{m}^3 \text{s}^{-1}$)	Mean of observations ($\text{m}^3 \text{s}^{-1}$)	No. of simulated observations
Calibration Period (2005–2011)					
Rundu	0.73	105.6 (42.5%)	-5.4 (-2.2%)	248.4	2440
Mohembo	0.69	97.1 (32.8%)	6.8 (2.3%)	295.9	1935
Validation Period (2012–2014)					
Rundu	0.71	100.8 (35.0%)	-59.3 (-20.6%)	288.2	454
Mohembo	0.33	144.0 (30.7%)	-119.0 (-25.4%)	469.1	46

Table 3. Performance of the operational model in the calibration and validation periods.

Period	In-situ station	Run	NSE (-)	RMSE ($\text{m}^3 \text{s}^{-1}$)	ME ($\text{m}^3 \text{s}^{-1}$)	Coverage (%)	Sharpness ($\text{m}^3 \text{s}^{-1}$)	Interval Skill Score ($\text{m}^3 \text{s}^{-1}$)	Mean of predicted observations ($\text{m}^3 \text{s}^{-1}$)	No. of predicted observations
Calibration Period (2005–2011)	Rundu	Open-Loop	0.73	105.6	-5.4	90.0	423.5	654.9	248.4	2440
		Assimilation	0.99	22.9	-0.9	88.6	54.1	147.1	248.4	2440
		1 day ahead	0.98	29.2	-0.3	86.7	64.4	196.3	248.5	2440
		2 day ahead	0.97	36.5	0.5	85.8	75.6	250.8	248.7	2439
		3 day ahead	0.95	44.0	1.3	84.5	86.7	307.5	248.9	2438
		4 day ahead	0.94	51.2	2.2	83.6	97.2	362.0	249.1	2437
		5 day ahead	0.92	57.9	3.1	83.3	106.9	415.2	249.3	2436
	6 day ahead	0.90	64.1	4.0	82.6	115.8	465.5	249.4	2435	
	7 day ahead	0.88	69.9	4.9	81.9	124.0	511.5	249.6	2434	
	Mohembo	Open-Loop	0.69	97.1	6.8	93.3	478.2	638.1	295.9	1935
		Assimilation	0.93	45.1	-11.3	93.3	154.5	251.2	295.9	1935
		1 day ahead	0.93	45.2	-11.2	93.3	154.5	251.7	295.9	1935
		2 day ahead	0.93	45.1	-11.1	93.4	154.6	249.3	296.0	1934
		3 day ahead	0.93	45.0	-11.0	93.4	154.7	246.9	296.0	1933
4 day ahead		0.93	44.9	-10.9	93.5	154.8	244.7	296.1	1932	
5 day ahead		0.93	44.8	-10.8	93.5	154.9	242.4	296.2	1931	
6 day ahead	0.93	44.8	-10.6	93.4	155.2	240.2	296.3	1930		
7 day ahead	0.93	45.0	-10.4	93.3	155.5	238.4	296.4	1929		
Validation Period (2012–2014)	Rundu	Open-Loop	0.71	100.8	-59.3	95.6	370.8	428.4	288.2	454
		Assimilation	0.98	26.0	0.05	92.1	58.0	151.0	288.2	454
		1 day ahead	0.97	34.9	0.9	90.2	68.1	221.0	293.6	438
		2 day ahead	0.94	44.4	1.8	88.1	78.5	298.7	296.4	429
		3 day ahead	0.92	53.5	2.6	87.1	88.3	374.7	296.6	426
		4 day ahead	0.89	61.6	3.2	86.3	97.6	441.4	297.3	422
		5 day ahead	0.87	68.7	3.8	85.3	106.7	501.3	298.8	416
	6 day ahead	0.84	74.3	4.2	84.3	114.6	545.8	298.9	413	
	7 day ahead	0.83	78.8	4.4	83.9	121.9	576.7	298.7	411	
	Mohembo	Open-Loop	0.33	144.0	-119	93.5	498.4	686.7	469.1	46
		Assimilation	0.92	48.4	-9.0	80.4	176.3	206.5	469.1	46
		1 day ahead	0.92	48.7	-7.6	81.8	178.3	209.5	478.9	44
		2 day ahead	0.92	49.0	-8.0	82.2	177.3	208.2	473.4	45
		3 day ahead	0.92	49.9	-7.4	81.8	178.5	210.6	480.4	44
4 day ahead		0.91	51.2	-7.5	79.5	178.6	213.6	481.4	44	
5 day ahead		0.91	52.3	-6.9	79.5	178.9	218.0	481.1	44	
6 day ahead	0.91	52.7	-7.8	76.6	176.4	233.0	464.2	47		
7 day ahead	0.92	52.1	-8.4	79.2	175.2	255.7	449.0	48		

Operational river discharge forecasting in poorly gauged basins: the Kavango River case study

P. Bauer-Gottwein et al.

[Title Page](#)

[Abstract](#) [Introduction](#)

[Conclusions](#) [References](#)

[Tables](#) [Figures](#)

[◀](#) [▶](#)

[◀](#) [▶](#)

[Back](#) [Close](#)

[Full Screen / Esc](#)

[Printer-friendly Version](#)

[Interactive Discussion](#)



Operational river discharge forecasting in poorly gauged basins: the Kavango River case study

P. Bauer-Gottwein et al.

Table 4. Performance indicators for the forecasts issued for the station Rundu in the validation period, excluding model “warm-up” periods.

Run	NSE (–)	RMSE ($\text{m}^3 \text{s}^{-1}$)	Cove- rage (%)	Sharp- ness ($\text{m}^3 \text{s}^{-1}$)	Interval Skill Score ($\text{m}^3 \text{s}^{-1}$)	Persistence index (–)	CRPS (–)	No. of predicted observations
Open-Loop	0.73	102.3	96.2	366.5	395.63		39.2	394
Assimilation	0.99	19.5	96.4	57.0	77.3		6.7	394
1 day ahead	0.98	25.1	95.0	66.8	107.5	–5.81	8.9	379
2 day ahead	0.97	31.3	94.1	76.6	142.6	–1.73	11.4	371
3 day ahead	0.96	37.3	93.5	85.6	180.5	–0.77	13.8	369
4 day ahead	0.95	43.1	92.9	94.3	216.7	–0.37	16.3	366
5 day ahead	0.94	48.5	91.7	102.7	252.5	–0.13	18.6	361
6 day ahead	0.93	53.2	90.8	109.9	280.3	0.03	20.6	359
7 day ahead	0.92	57.1	90.8	116.4	300.9	0.16	22.4	358

[Title Page](#)
[Abstract](#)
[Introduction](#)
[Conclusions](#)
[References](#)
[Tables](#)
[Figures](#)
[⏪](#)
[⏩](#)
[◀](#)
[▶](#)
[Back](#)
[Close](#)
[Full Screen / Esc](#)
[Printer-friendly Version](#)
[Interactive Discussion](#)

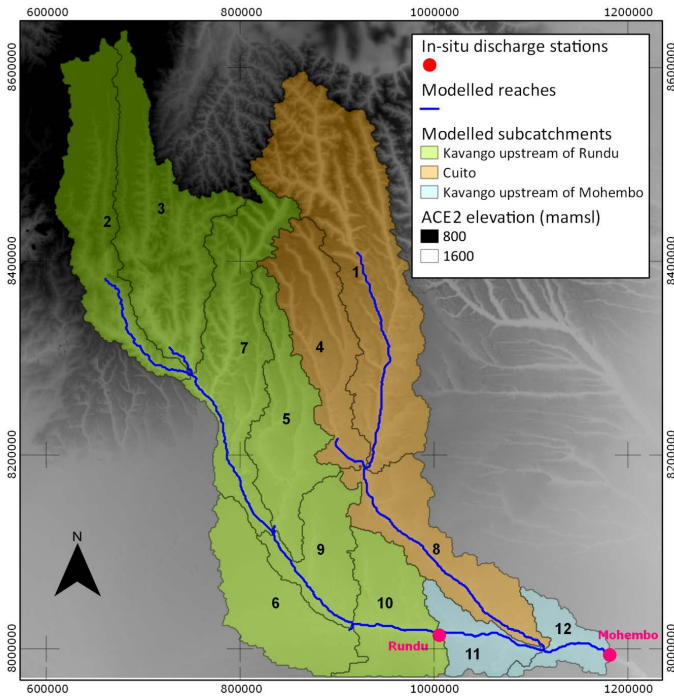


Figure 1. Basemap for the Kavango River Basin with location of in-situ discharge stations. The coordinate system is UTM 33S, WGS84 datum.

HESSD

11, 11071–11108, 2014

Operational river discharge forecasting in poorly gauged basins: the Kavango River case study

P. Bauer-Gottwein et al.

[Title Page](#)

[Abstract](#)

[Introduction](#)

[Conclusions](#)

[References](#)

[Tables](#)

[Figures](#)

[⏪](#)

[⏩](#)

[⏴](#)

[⏵](#)

[Back](#)

[Close](#)

[Full Screen / Esc](#)

[Printer-friendly Version](#)

[Interactive Discussion](#)



Operational river discharge forecasting in poorly gauged basins: the Kavango River case study

P. Bauer-Gottwein et al.

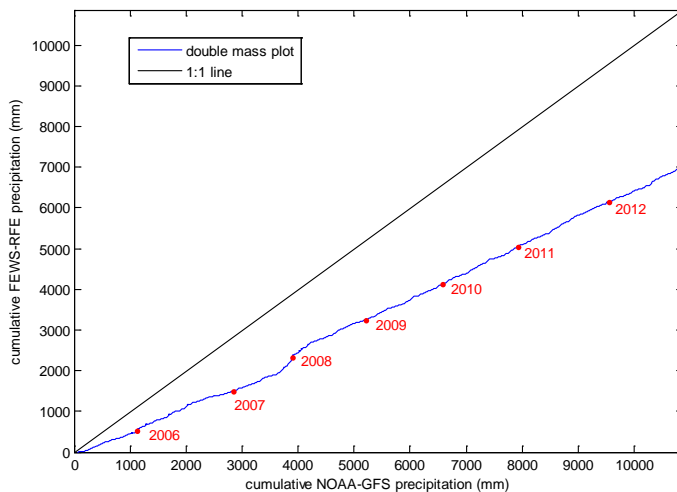


Figure 2. Double mass plot of the FEWS-RFE and NOAA-GFS precipitation products averaged over the entire Kavango River Basin.

Operational river discharge forecasting in poorly gauged basins: the Kavango River case study

P. Bauer-Gottwein et al.

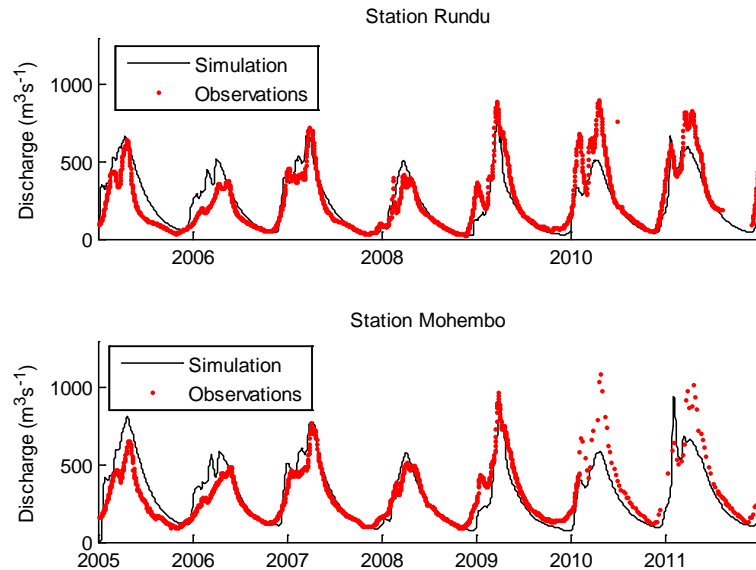


Figure 3. Observed (red dots) and simulated (black lines) hydrographs for the calibration period for Rundu (top panel) and Mohembo (bottom panel).

[Title Page](#)[Abstract](#)[Introduction](#)[Conclusions](#)[References](#)[Tables](#)[Figures](#)[⏪](#)[⏩](#)[◀](#)[▶](#)[Back](#)[Close](#)[Full Screen / Esc](#)[Printer-friendly Version](#)[Interactive Discussion](#)

Operational river discharge forecasting in poorly gauged basins: the Kavango River case study

P. Bauer-Gottwein et al.

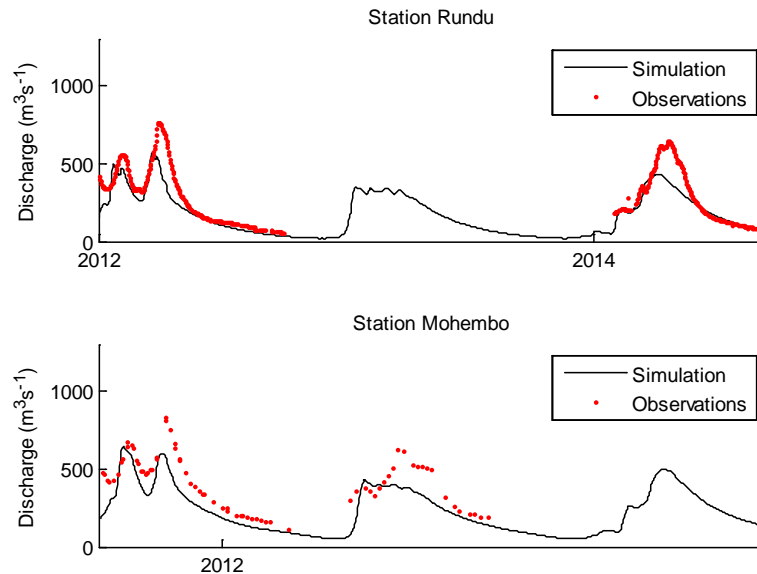


Figure 4. Observed (red dots) and simulated (black lines) hydrographs for the validation period for Rundu (top panel) and Mohembo (bottom panel).

Operational river discharge forecasting in poorly gauged basins: the Kavango River case study

P. Bauer-Gottwein et al.

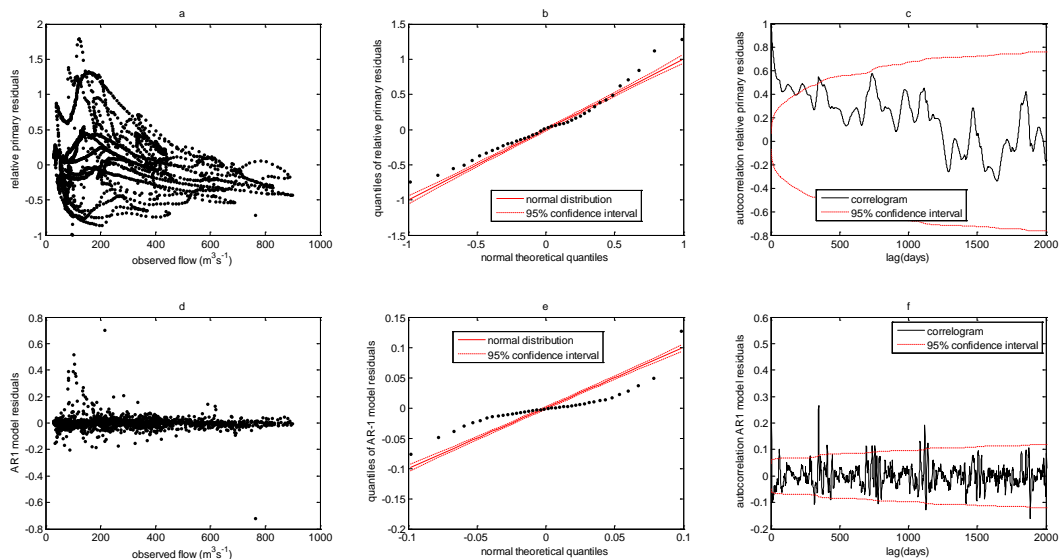


Figure 5. (a) Relative error of the hydrologic–hydrodynamic model vs. observed discharge. (b) Q – Q plot of the relative errors shown in (a). (c) Correlogram of the relative errors shown in (a). (d) Relative errors of hydrologic–hydrodynamic model after removal of the time-correlated part plotted vs. observed discharge. (e) Q – Q plot of the relative errors shown in (d). (f) Correlogram of the relative errors shown in (d).

[Title Page](#)
[Abstract](#)
[Introduction](#)
[Conclusions](#)
[References](#)
[Tables](#)
[Figures](#)
[⏪](#)
[⏩](#)
[◀](#)
[▶](#)
[Back](#)
[Close](#)
[Full Screen / Esc](#)
[Printer-friendly Version](#)
[Interactive Discussion](#)

Operational river discharge forecasting in poorly gauged basins: the Kavango River case study

P. Bauer-Gottwein et al.

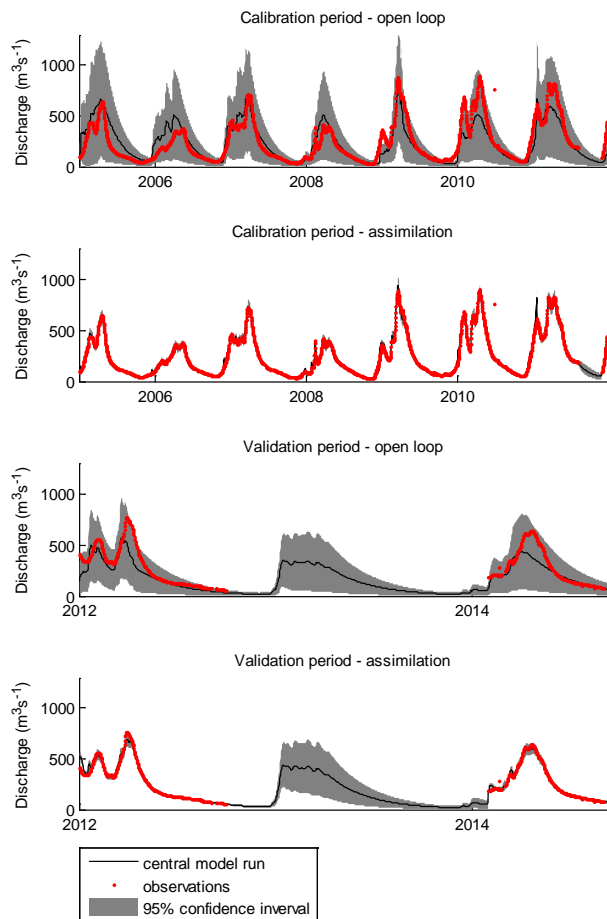


Figure 6. Probabilistic simulation of river discharge in the open-loop and assimilated run for the calibration and the validation periods for the station Rundu.

Operational river discharge forecasting in poorly gauged basins: the Kavango River case study

P. Bauer-Gottwein et al.

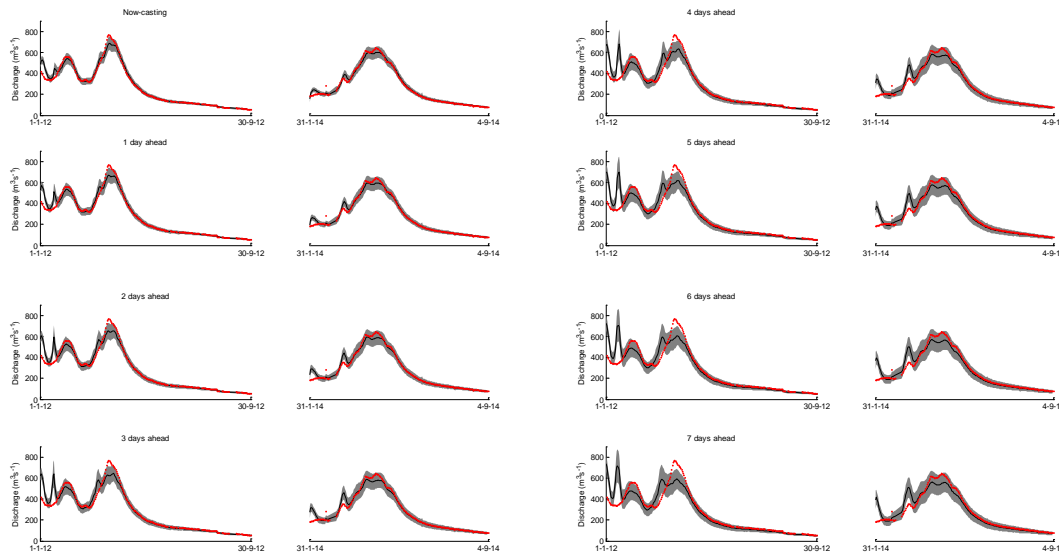


Figure 7. Performance of the 0–7 day ahead probabilistic forecasts in the validation period at Rundu station. The black solid line is the central forecast. Grey shading indicates the 95 % confidence interval of the forecast and red dots are observations.

[Title Page](#)[Abstract](#)[Introduction](#)[Conclusions](#)[References](#)[Tables](#)[Figures](#)[⏪](#)[⏩](#)[◀](#)[▶](#)[Back](#)[Close](#)[Full Screen / Esc](#)[Printer-friendly Version](#)[Interactive Discussion](#)

Operational river discharge forecasting in poorly gauged basins: the Kavango River case study

P. Bauer-Gottwein et al.

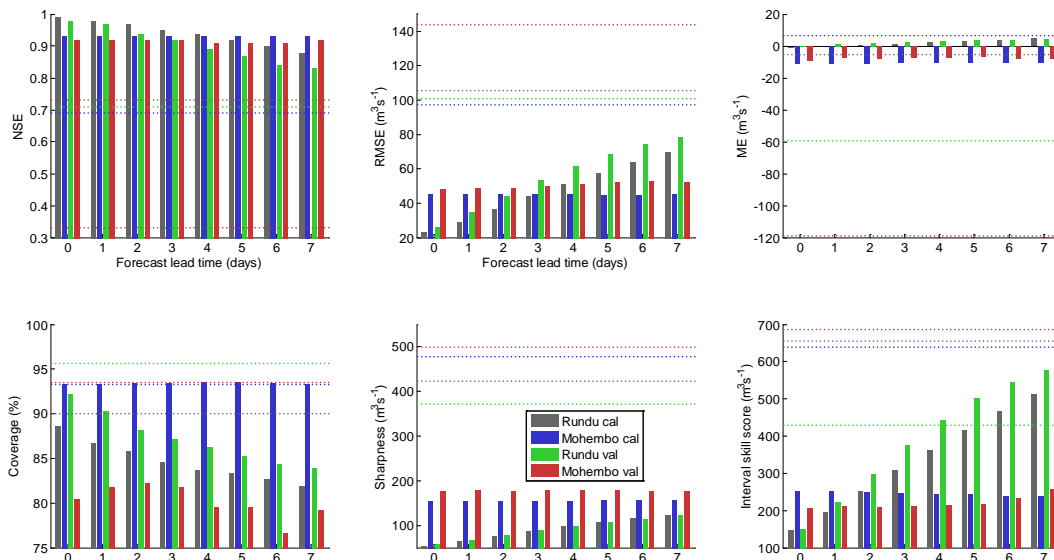


Figure 8. Graphical illustration of performance statistics listed in Table 3. Bars indicate performance of the 0–7 ahead forecasts while dashed lines indicate the performance of the open-loop run. Colors refer to the two in-situ stations and the calibration and validation periods respectively.

[Title Page](#)
[Abstract](#)
[Introduction](#)
[Conclusions](#)
[References](#)
[Tables](#)
[Figures](#)
[Back](#)
[Close](#)
[Full Screen / Esc](#)
[Printer-friendly Version](#)
[Interactive Discussion](#)

Operational river discharge forecasting in poorly gauged basins: the Kavango River case study

P. Bauer-Gottwein et al.

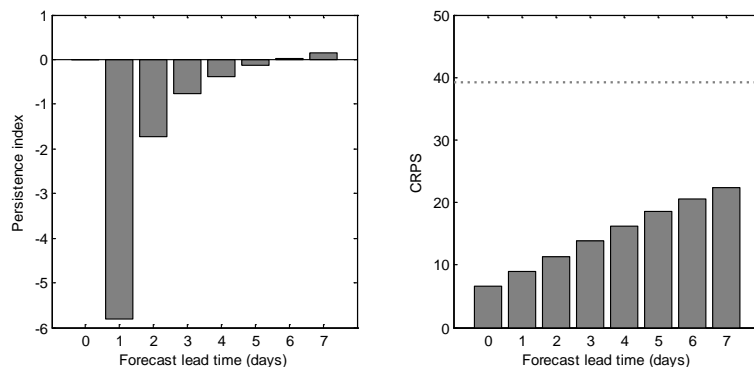


Figure 9. Graphical illustration of the PI and CRPS scores reported in Table 4 for the station Rundu. The dashed line indicates the performance of the open-loop run.

[Title Page](#)[Abstract](#)[Introduction](#)[Conclusions](#)[References](#)[Tables](#)[Figures](#)[⏪](#)[⏩](#)[◀](#)[▶](#)[Back](#)[Close](#)[Full Screen / Esc](#)[Printer-friendly Version](#)[Interactive Discussion](#)